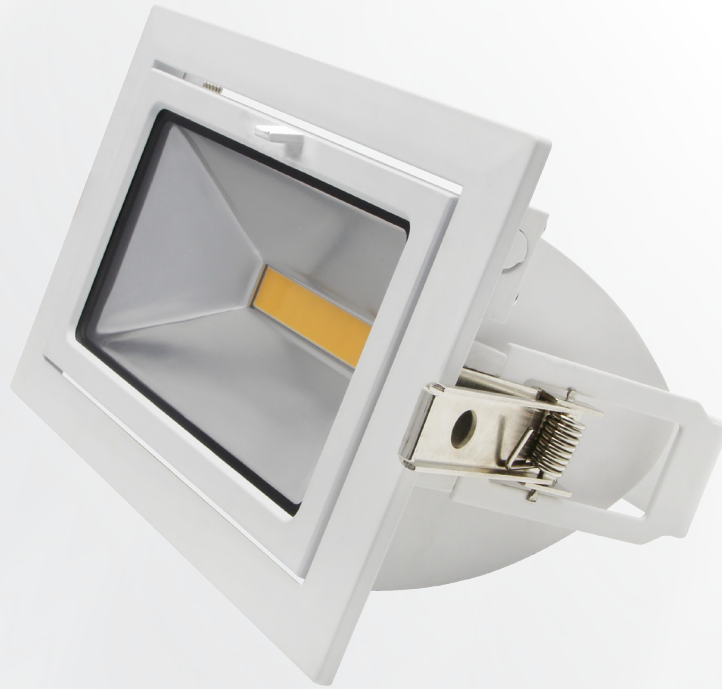


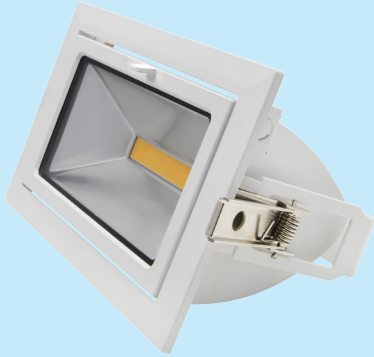


UPSHINE®



Technical Application  
Guide for UP-SHINE  
LED Downlight  
UP-RD01-35W

# Introduction



Up-shine rectangular downlight is unique designed with COB high power LED chip. IP65 waterproof designed for various applications, especially for damp location. AL6063 Aluminum profile provides excellent thermal dissipation. Isolated external driver solution achieves stable working performance.

- Up to 70% energy saving compared to standard CFL
- Long lifetime of 40,000 hours
- 120° wide beam angle
- L220XW130mm cutout
- CCT: 3000K 4000K  
5000K 5700K
- No UV/IR light
- Environment friendly, without Mercury or any other hazardous substances

## Application notes

- IP65
- Professional electrician for installation only
- Switch off before installation
- Do not touch when in use
- Keep away from hot steam and corrosive gas

## Application Areas

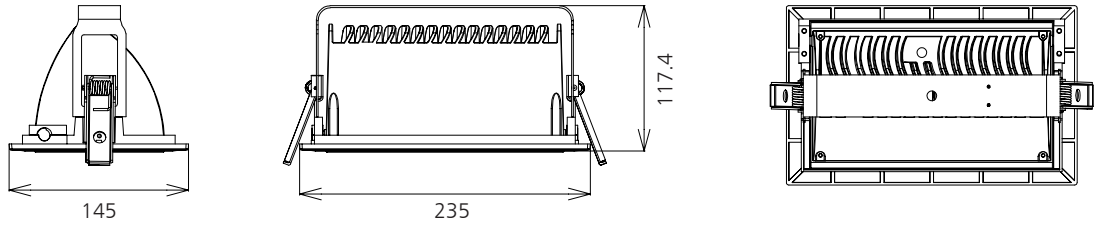
It is designed for general lighting applications in office, supermarket, shop, school, hotel, etc. It is also widely used for public areas, such as stairway, lobby, reception, corridors etc.

## Certificate

CE RoHS SAA



# Product Information



## Technical Specifications

Model	Voltage	Power	Power Factor	Lumen (±5%)	Beam angle	CCT	Lifespan	CRI	Dimmable	Dimension
UP-RD01-35W	AC100-240V	35W	≥0.9	2800	120°	3000K	40000h	≥80	No	L235*W145*H117.4mm cutout L220*W130mm
UP-RD01-35W	AC100-240V	35W	≥0.9	3000	120°	4000K	40000h	≥80	No	L235*W145*H117.4mm cutout L220*W130mm
UP-RD01-35W	AC100-240V	35W	≥0.9	3050	120°	5000K	40000h	≥80	No	L235*W145*H117.4mm cutout L220*W130mm
UP-RD01-35W	AC100-240V	35W	≥0.9	2950	120°	5700K	40000h	≥80	No	L235*W145*H117.4mm cutout L220*W130mm

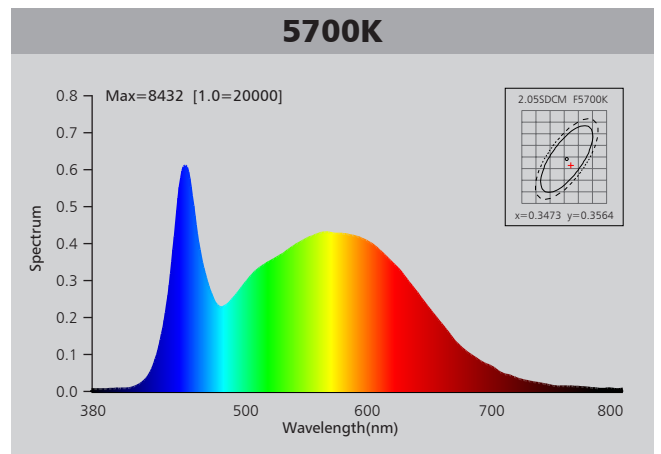
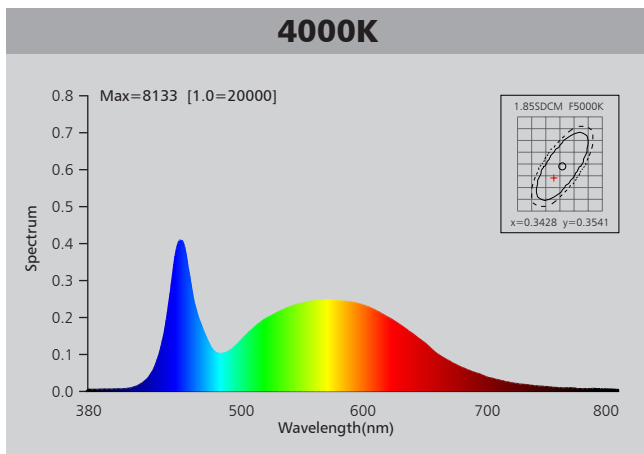
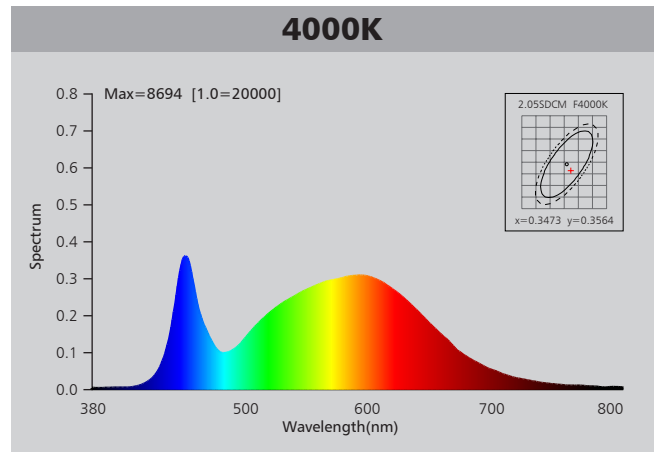
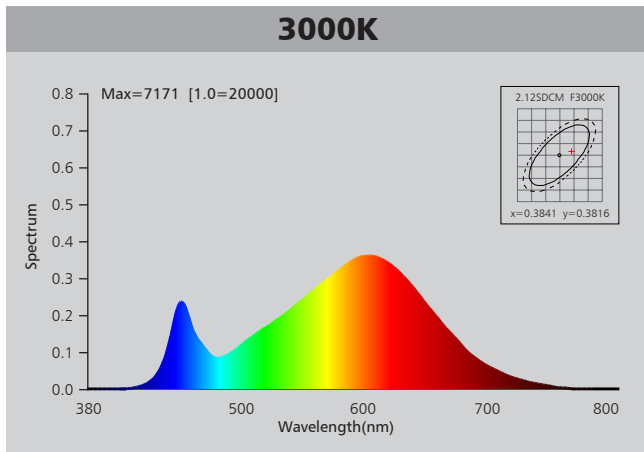
## Driver data Sheet

Driver data	Non-dim
Input rated Voltage	AC100-240V
Frequency	50/60HZ
Input Voltage	AC85-265V
Efficiency	≥84%
Total load Wattage	35W±5%
Power Factor	≥0.9
Rated input current	≤0.4A
Full load output Voltage	DC29-32V
Rated output current	950mA
Output current range	950mA±5%
Power tolerance	±5%
Current output tolerance	±5%
Short circuit protection	PASS
Over voltage protection	PASS
Over temperature protection	PASS
Withstand voltage	AC3750V

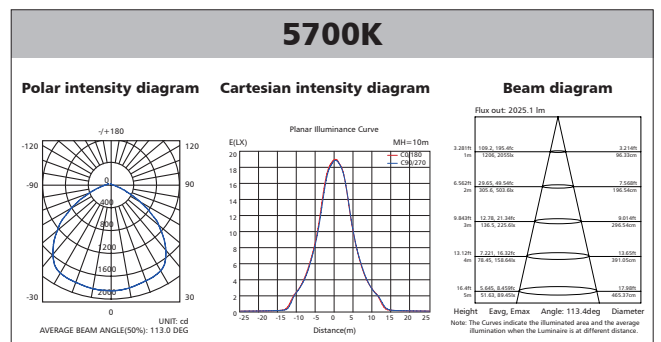
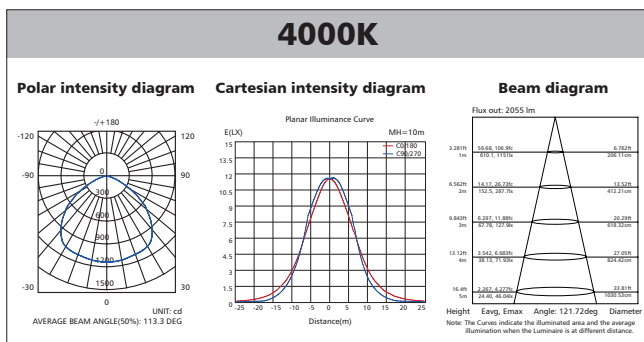
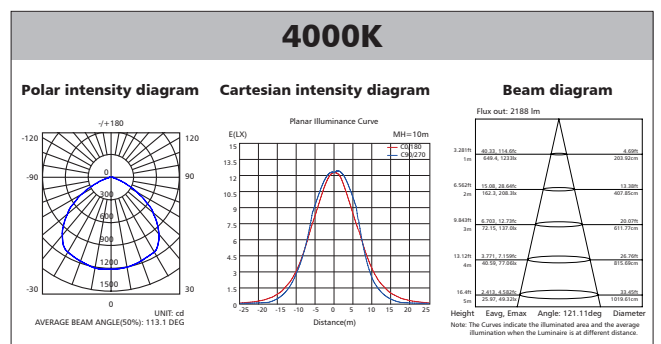
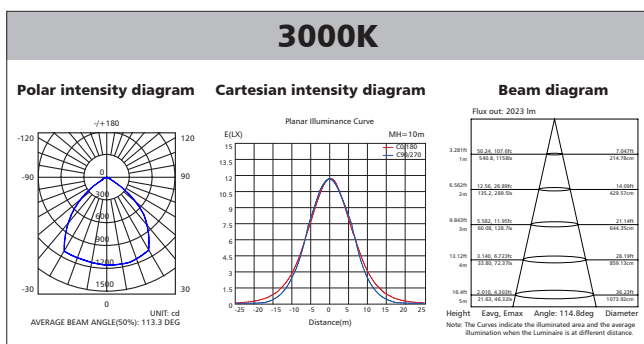
## Fixture Compatibility

Rated Wattage	Electrical Classification	Ingress Protection	Operating Temp	Operating Humidity	Storage Temp
35W	II	IP65	-20°C~45°C	0~90%	-20°C~65°C

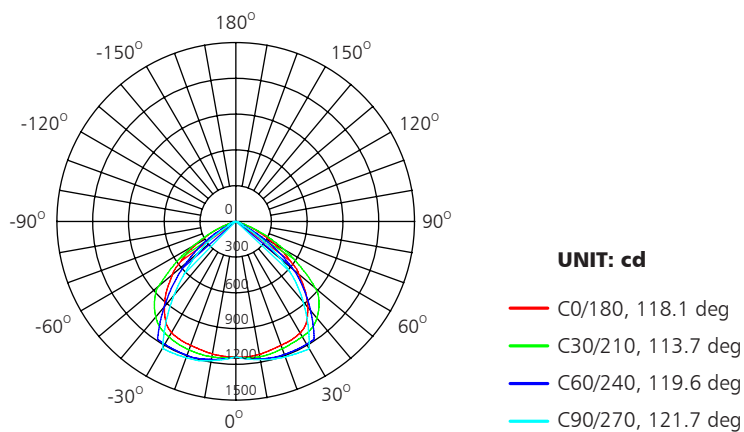
# Spectral Distribution



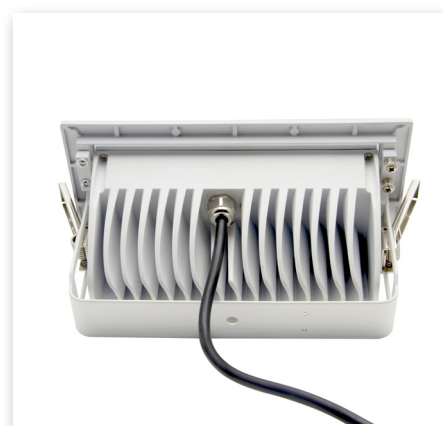
# Photometric Diagram



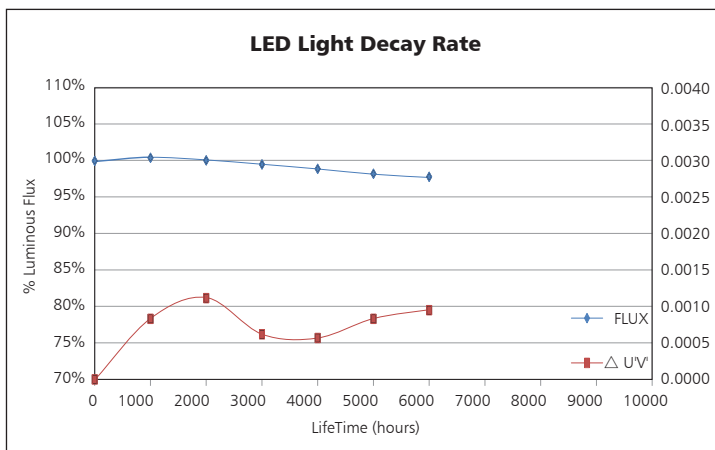
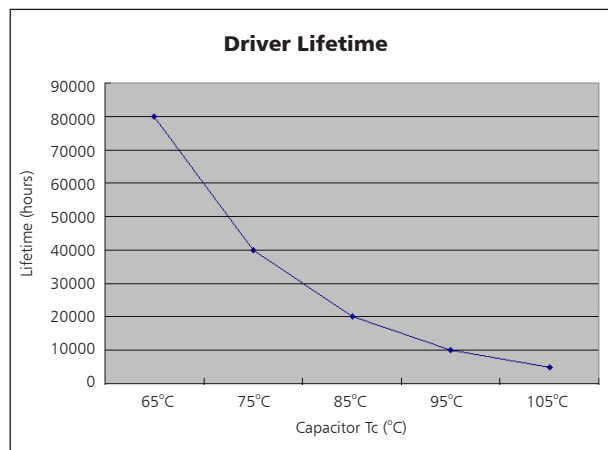
## Polar Diagram Comparison



AVERAGE BEAM ANGLE (50%): 113.3DEG

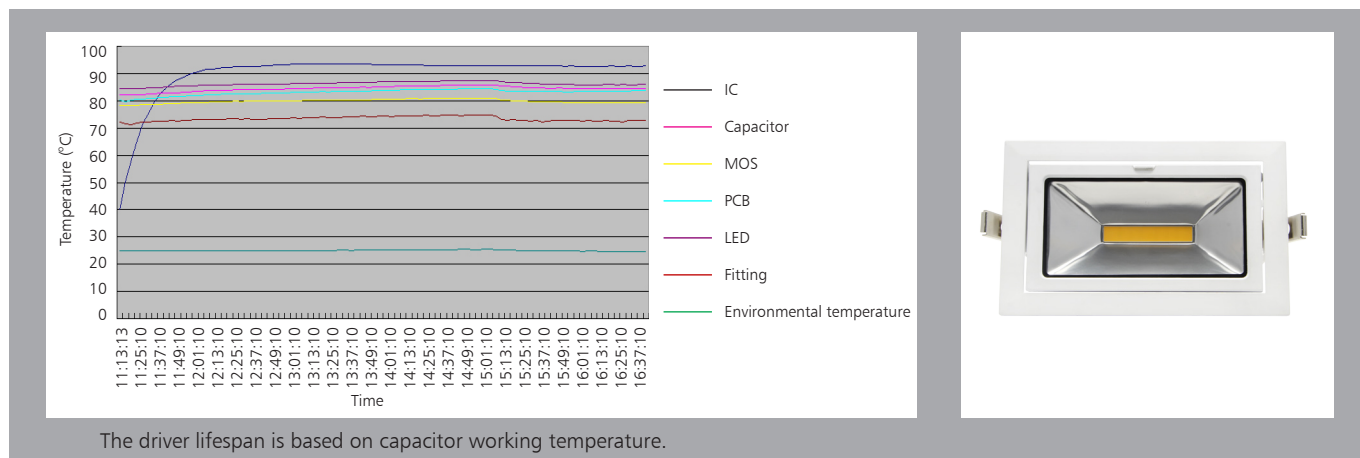


## Driver lifetime & LED light decay rate



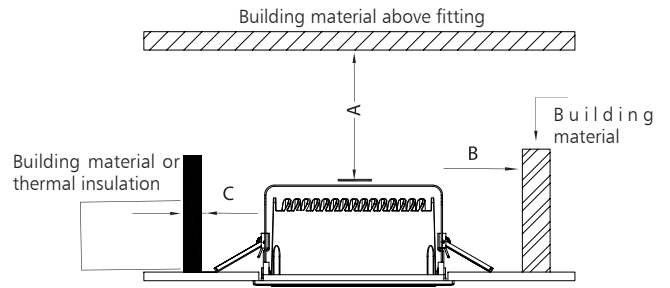
## Temperature

- The testing is operated at 25°C
- The lifetime of capacitor, minimum of 5,000 hours if operated at 105°C, will be doubled whenever the temperature drops 10°C
- The highest withstand temperature of IC, MOS could be 120°C
- The highest withstand temperature of LED junction temperature is 150°C



# Installation

Install requirements	
A-gap above the fitting	25mm
B-gap to the building material	25mm
C-gap to the thermal insulation	25mm



<p>Ceiling opening L220*W130mm</p> <p style="text-align: right;">1</p>	<p style="text-align: right;">2</p>
<p style="text-align: right;">3</p>	<p style="text-align: right;">4</p>

# Packaging Information

	SIZE(CM)	N.W/pc (KGS)	G.W.(KGS)	Q'TY(PCS)
Carton	59.5*29.5*36.5	2.4	15.8	6

	CTNS	Q'TY(PCS)	VOLUME(CBM)
20" standard container	396	2376	28
40" standard container	816	4896	56

