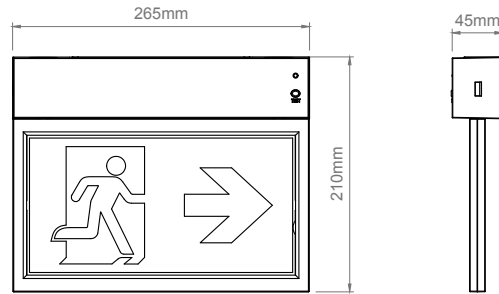


INSTALLATION INSTRUCTIONS FOR LED EXIT SIGN

Model No.:ESA08



IP40



Product Feature

Power Supply	: 220-240VAC, 50/60 Hz	Emergency Duration	: 1 Hour / 3 Hours
Power Consumption	: Max. 3.8W	Protection Class	: II
Ambient Operating Temp	: 0°C...+40°C	IP Rating	: IP40
Charge Time	: 24 Hours	Function	: AUTO test and Manual test
Operation	: Maintained and Non maintained	Installation	: Wall mount or Ceiling mount
		Viewing distance	: 24m

Precautions

This product should be installed by a registered electrician in accordance with local standards and electrical regulations. Take care to ensure the mains supply is isolated before installation.

Service & Operation

Manual test: Press the test switch button, LED indicator will go out and the sign will be illuminate from its battery pack.

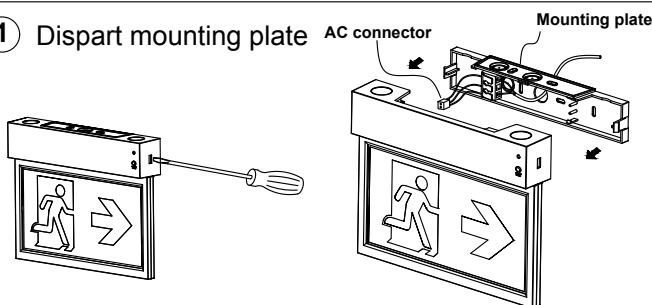
AUTO test: Detail instruction refer to "INSTRUCTION FOR AUTOMATIC TEST OPTION".

Battery: LiFePO₄ rechargeable battery pack. Battery should be replaced when the required duration is no longer achieved. To avoid any damage to the fixture and ensure its performance, the battery should be replaced with same brand and type.

Battery have to recharge if product keep in stock over 12 months, detail manual refer "BATTERY STOCK AND RECHARGE GUIDELINE".

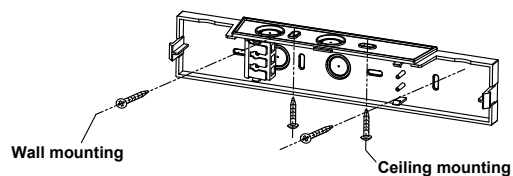
Mounting Instructions

① Dispart mounting plate



- Insert flat screwdriver into slot on side of unit, pry off and remove the mounting plate from unit.
- Disconnect AC connector from PCBA.

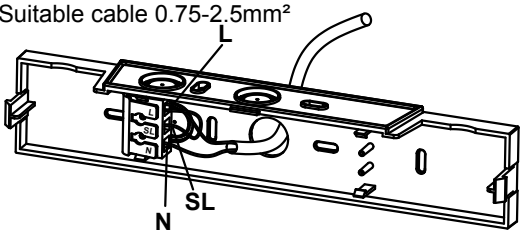
② Wall mounting or Ceiling mounting



- Knock out appropriate center cable entry hole and mounting screw hole on the mounting plate.
- Route AC supply wire through center hole of mounting plate.
- Fix mounting plate on the mount surface with screws and anchor nuts.

③ Wiring connection

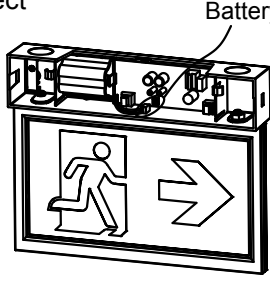
Suitable cable 0.75-2.5mm²



Connect the AC supply wire to terminal block. Refer to wiring instruction showed below.

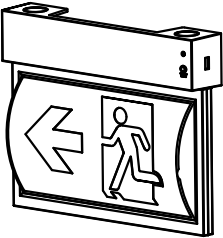
④ Battery connect

Battery connector



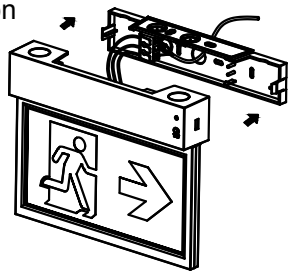
Connect battery male and female connector inside of mounting bracket.

⑤ Change pictogram when necessary



Remove the pictogram on the unit, select other pictogram you need then insert into slot of panel.

⑥ Finish installation



Snap AC supply on PCBA and then snap fixture to mounting plate.

Wiring Instructions

Maintained Wiring

AC Supply INPUT
220-240V 50/60Hz

Neutral (Blue) — N — Neutral

Jumper cable — SL — Switched Live

Live (Brown) — L — Unswitched Live

Maintained (default operation):
Connect L,N and leave jumper cable connected.

Non-Maintained Wiring

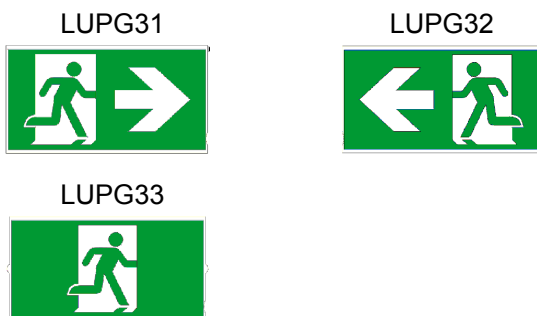
AC Supply INPUT
220-240V 50/60Hz

Neutral (Blue) — N — Neutral

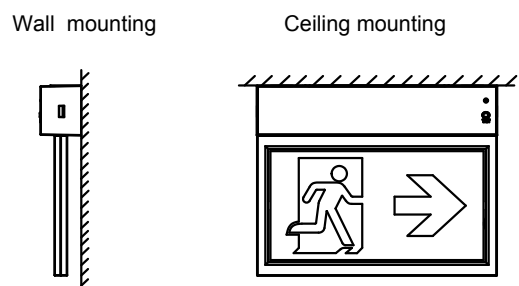
Live (Brown) — L — Unswitched Live

Non-maintained:
Connect L,N and remove jumper cable.

Pictogram Styles



Mounting Options



Technical Information

Model Number	Input Voltage	Charge Duration	Discharge Duration	Battery (LiFePO ₄ 14500)	Power Consumption	LEDs
ESA08/1H/MT/LFP/500CDX	220-240V~50/60Hz	24h	1 h	3.2V600mA	3.5W Max.	SMD 2835 14 pcs
ESA08/3H/MT/LFP/500CDX	220-240V~50/60Hz	24h	3 h	6.4V600mA	3.8W Max.	SMD 2835 14 pcs
ESA08/1H/AT/LFP/500CDX	220-240V~50/60Hz	24h	1 h	3.2V600mA	3.5W Max.	SMD 2835 14 pcs
ESA08/3H/AT/LFP/500CDX	220-240V~50/60Hz	24h	3 h	6.4V600mA	3.8W Max.	SMD 2835 14 pcs