

LED VAPOR PROOF

■ Safety Instructions

To ensure correct function and safety, please read and follow all instructions carefully before using the product:

1. Turn off power before installation or before doing any maintenance work.
2. Do not install any luminaire near the heat source.
3. Do not exceed the nominal supply voltage or amperage ratings.
4. All wiring and installation of the light fitting must adhere to local and national wiring rules.
5. Take care not to pull any electrical wires during unpacking as this may damage the connection.
6. Lay out all the components on a smooth surface and make sure there are no components missing before assembling.
7. To avoid injury or damage to the fitting, please ensure that power leads and screws are secure before connecting the power.
8. Please keep instructions for future reference.

■ Installation Procedure

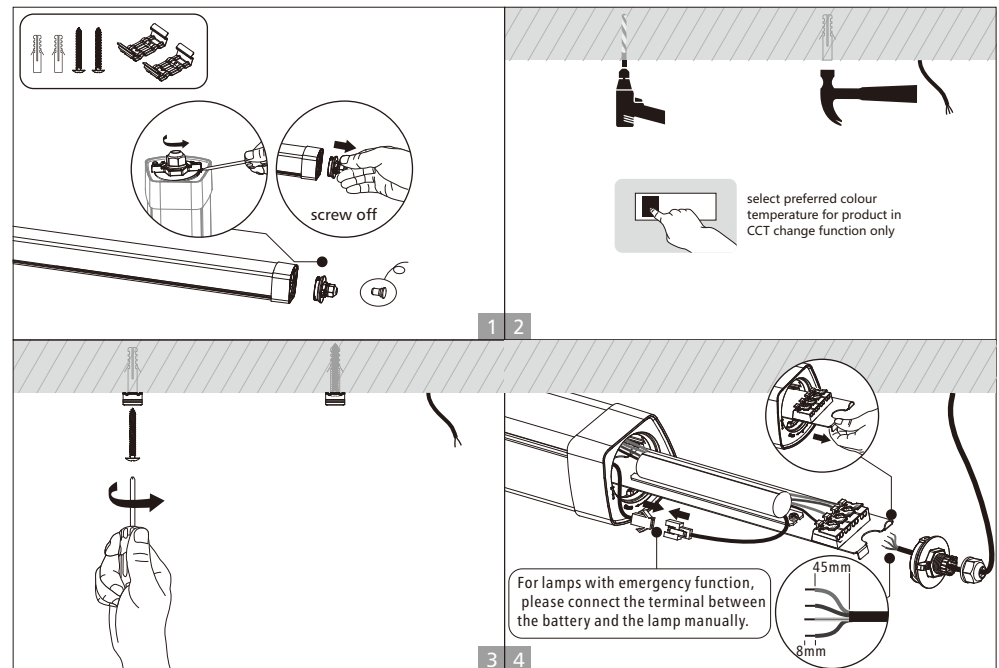
WARNING ⚡

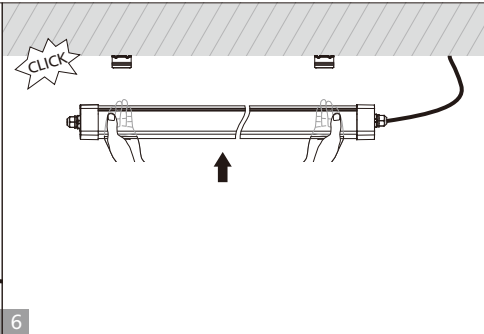
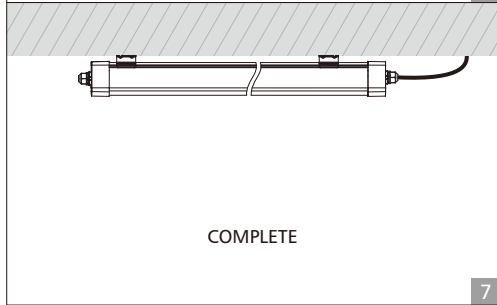
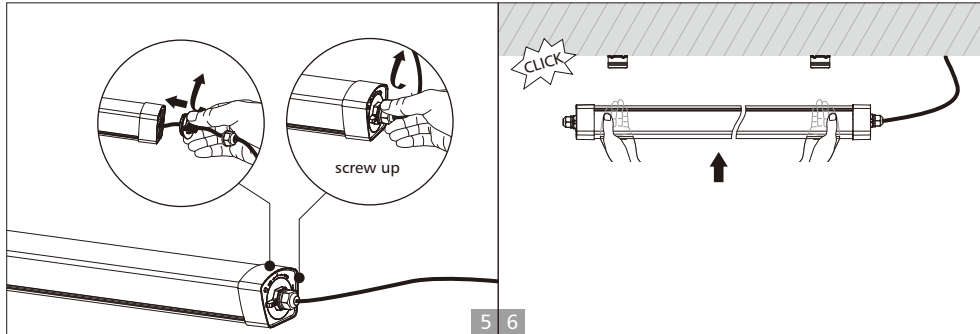
1. Switch off before installation.
2. Switch on only after complete installation and examination of the circuit.
3. Professional electrician for installation and maintenance only.



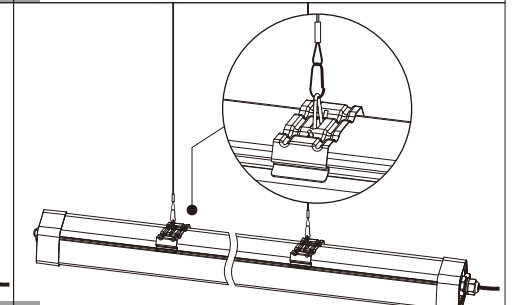
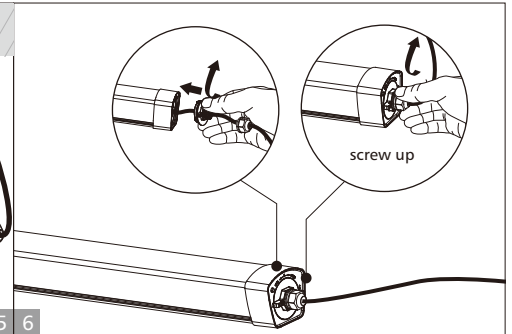
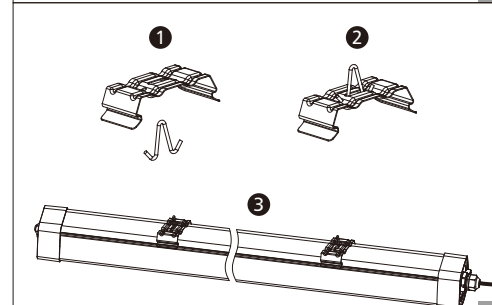
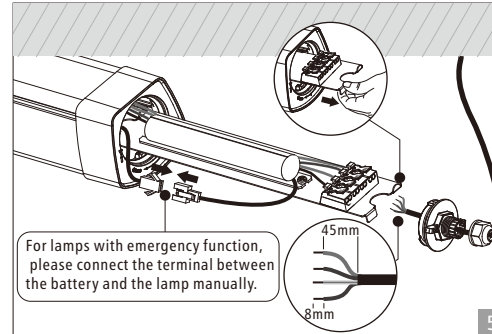
Turn Off power supply before starting any installation. Read instructions & check you have all the tools & accessories to complete the installation correctly.

■ Surface mounted installation

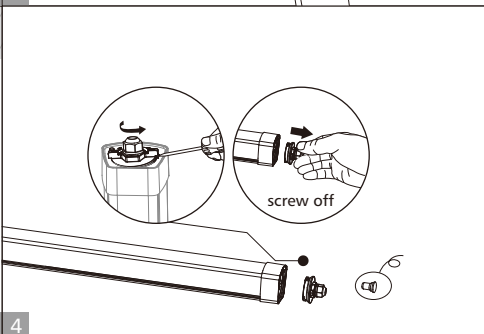
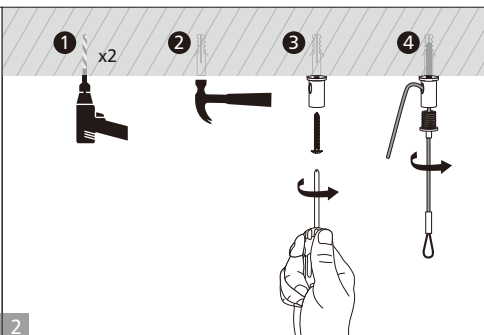
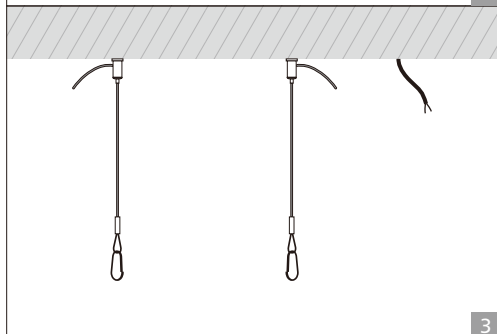
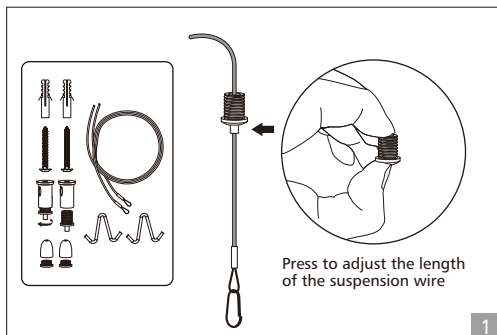




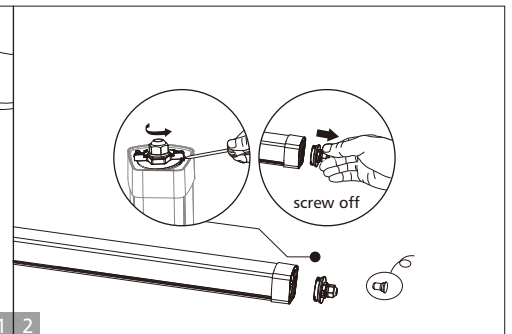
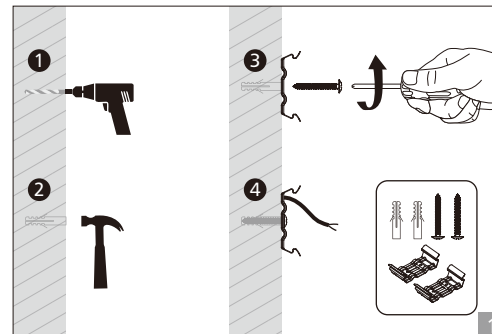
Standard/Sensor	Emergency	DALI
<p>N = Neutral E = Earth L = Switched</p>	<p>L = Switched L = Unswitched E = Earth N = Neutral</p>	<p>L = Switched E = Earth N = Neutral DA = DIM + DA = DIM -</p>

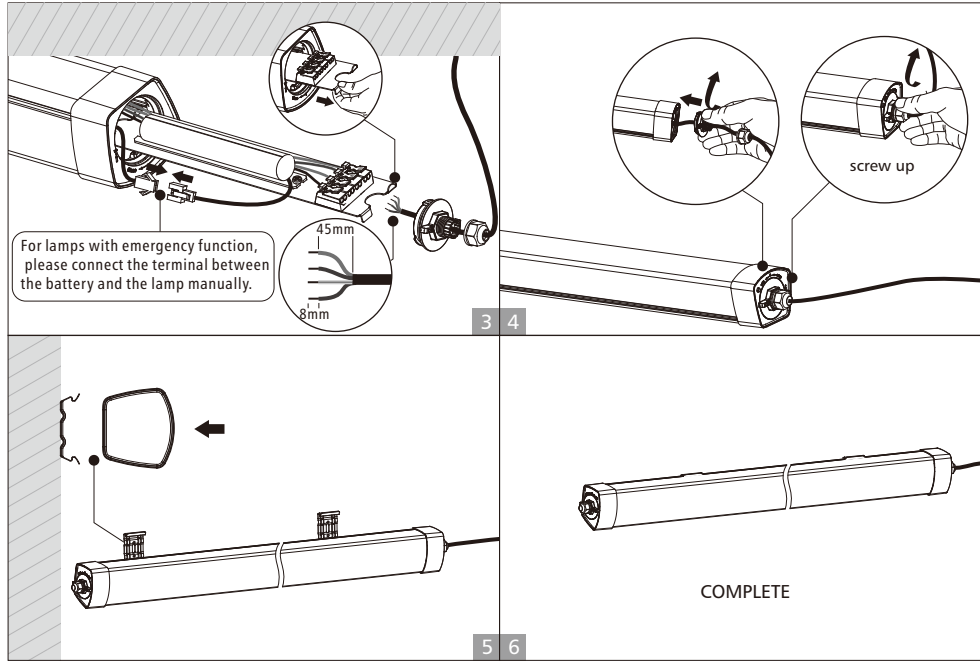


Suspended installation

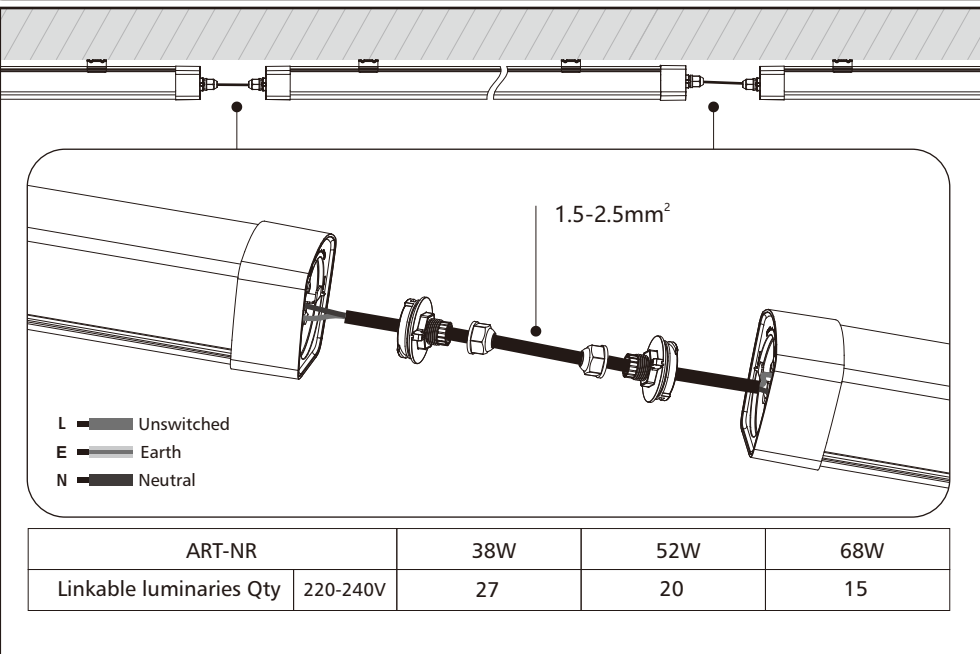


Wall mounted installation

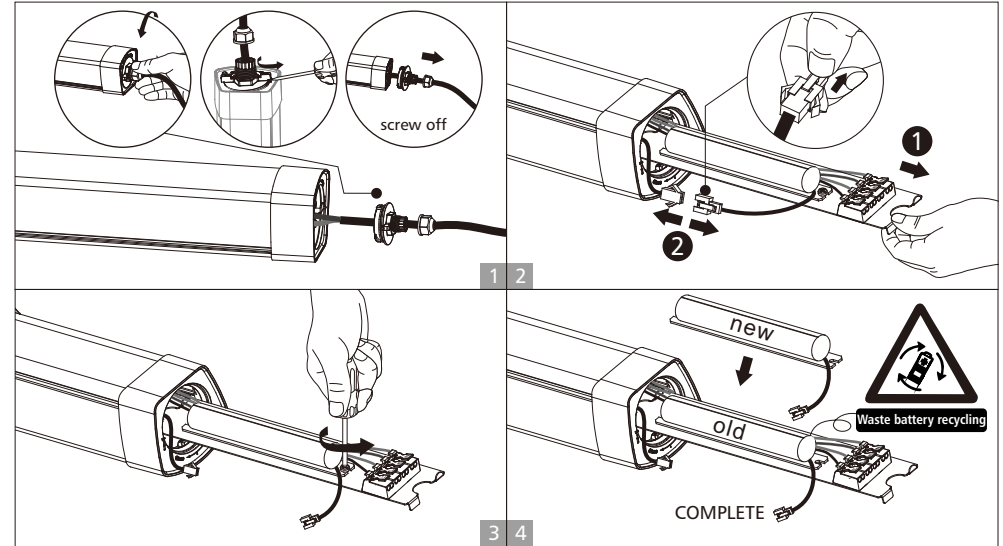




Splicing for installation



Replace battery



Functions Instruction (For specific function, please refer to actual model)



Emergency

Emergency function switches automatically between power cut and power restoration.

- Li battery, high efficiency
- Battery duration: 3 hours
- Charge period: 24 hours



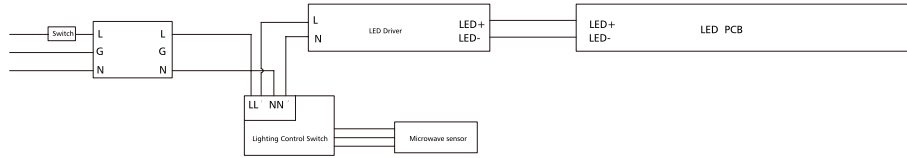
Sensor

Detection area: 140 degree wide detective beam angle with 4-6 meters distance.

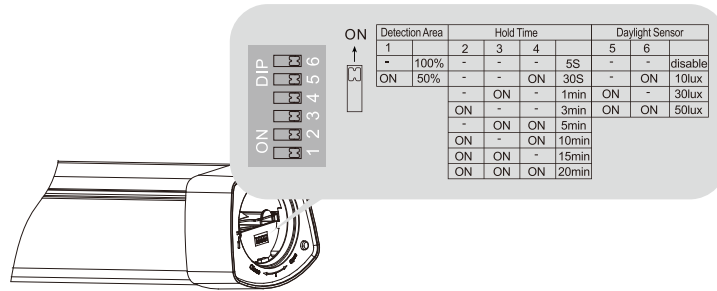
Sensor datasheet

Operating Voltage	220-240VAC 50/60Hz
Power consumption	1.5W±0.5W
Microwave frequency	5.8GHz±75MHz, ISM wave band
Transmission power	<0.5mW
Detection angle	140°
Detection Area	4-6M 100%/50% Adjustable DIP
Hold time	5S/30S/1min/3min/5min/10min/15min/20min Adjustable DIP
Daylight sensor	Disable/10Lux/30Lux/50Lux Adjustable DIP
Stand-by DIM Level	-
Stand-by Period	-
Dimming Range	-
Microwave ON/OFF function	-
Installation Height	Recommended Installation Height: Wall mounted height 1.8m. Ceiling mounted height 3m.
Minimum mounting distance	Recommended install height should be more than 3m
Operating temperature(°C)	-20°C~60°C

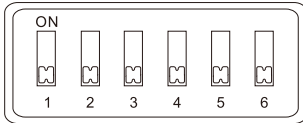
Wiring Diagram



Sensor Setting



Factory setting



Detection Area	Hold Time	Daylight Sensor
100%	5S	Disable

Sensor Setting

Detection area:

Sensor test condition: The test is based on 3m height, the detect distance radius is based on ground, the detect distance can be adjusted through the slide switch.

Sensor test environment and reference: The detect range is measured by human body whose stature is around 1.6-1.7M with medium size and traveling speed is around 1.0-1.5M per second. If the stature, bodily form and traveling speed are changed, then the detect range will be changed accordingly.

Sensor lamp's reaction under open/narrow environment: Test result will be highly influenced by test environment, the more open environment, the closer detect distance; the narrower environment, the longer detect distance. The detector may do self-excitation in a narrow environment.

Sensor Setting based on environmental disturbance: Some environmental disturbances will cause abnormal induction, such as the lamp can not automatically turn off for a long time or the sensor function is invalid, then users can adjust sensor distance to reach the ideal effect. It is recommended to adjust the sensing distance to 50% for the environment where near the heavy equipment, metal sheets and metal pipes, concrete wall (<30cm thickness) etc. Recommend to keep 100% sensor distance in open environment. For environment where near the routers, telecommunications base stations, electrical machinery etc, it is recommended to keep the installation distance of more than 5 meters and adjust to 50% sensor distance.

Detection Area	
1	
-	100%
ON	50%

Hold Time		
2	3	4
-	-	- 5S
-	-	ON 30S
-	ON	- 1min
ON	-	- 3min
-	ON	ON 5min
ON	-	ON 10min
ON	ON	- 15min
ON	ON	ON 20min

Hold time:

Refers to the time period the lamp remains at 100% illumination after no motion detected.

Notice 1: The hold time can be selected by the slide switch.

The hold time counting should be started after the sensor is powered on and initialized.

Daylight Sensor		
5	6	
-	-	disable
-	ON	10lux
ON	-	30lux
ON	ON	50lux

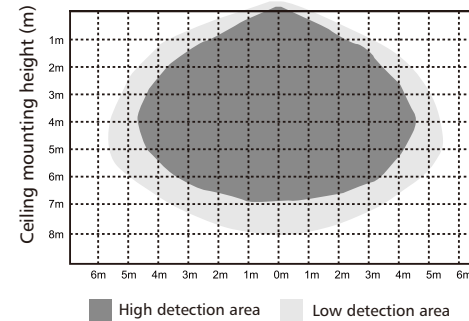
Daylight sensor:

The sensor can be set to only allow the lamp to illuminate below a defined ambient brightness threshold. When set to Disable mode, the daylight sensor will switch on the lamp when motion is detected regardless of ambient light level.

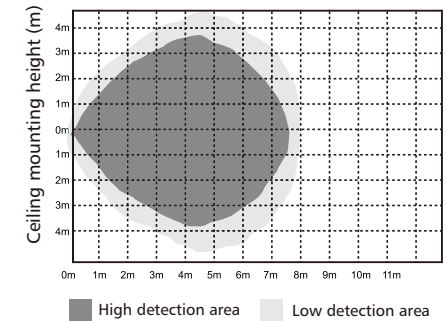
Notice 1: The light threshold can be selected through the slide switch, it may cause a large deviation in different lamps.

Induction Range

Ceiling Mounting pattern(Unit: m)



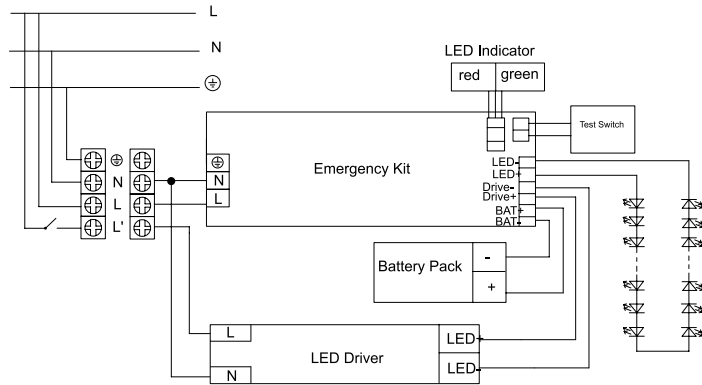
Wall Mounting pattern(Unit: m)



Driver Datasheet (Emergency)

Power	3W
Rated Input Voltage(V)	AC230V
Frequency	50/60Hz
Input Voltage	200-240V
Total load Wattage	3W±0.5W
Rated input current	≤0.03A
Battery	6.4V 1500mAh (LiFePO4)
Lifetime	Over 2000 cycles
Battery duration	≥3hrs
Charge Period	24H
Emergency switching time	≤1S

Wiring Diagram(Emergency)



Instructions for automatic test option

1. Once the unit is powered up it will automatically initiate a self test and diagnostics as follows:

- Every 4seconds: Check for battery disconnection, charger board fault, lamp failure and transformer failure.
- Every month: Perform a 3minutes duration test.
- Every year: Perform a 1 Hour or 3 Hours duration test.

All test functions are factory preset and do not need field adjustment.

2. Dual Colour Indicator LED Status Meanings

- Green Solid On Ready/Normal Operation
- Red Requires Service

•	One flash, 4 seconds pause	Battery not connected
• •	Two flashes, 4 seconds pause	Low battery voltage
• • •	Three flashes, 4 seconds pause	Charger board fault
• • • •	Four flashes, 4 seconds pause	Transformer fault
• • • • •	Five flashes, 4 seconds pause	LED lamp fault

NOTE: After repairing a service fault, press and hold the test button for 2 seconds to reset the flashing indicator light to green.

3. Manual Test

Press test button once	30 seconds duration test
Press test button twice within 2 seconds	3 minutes duration test
Press test button 3 times within 2 seconds	30 minutes duration test
Press test button 4 times within 2 seconds	1 or 3 hours duration test