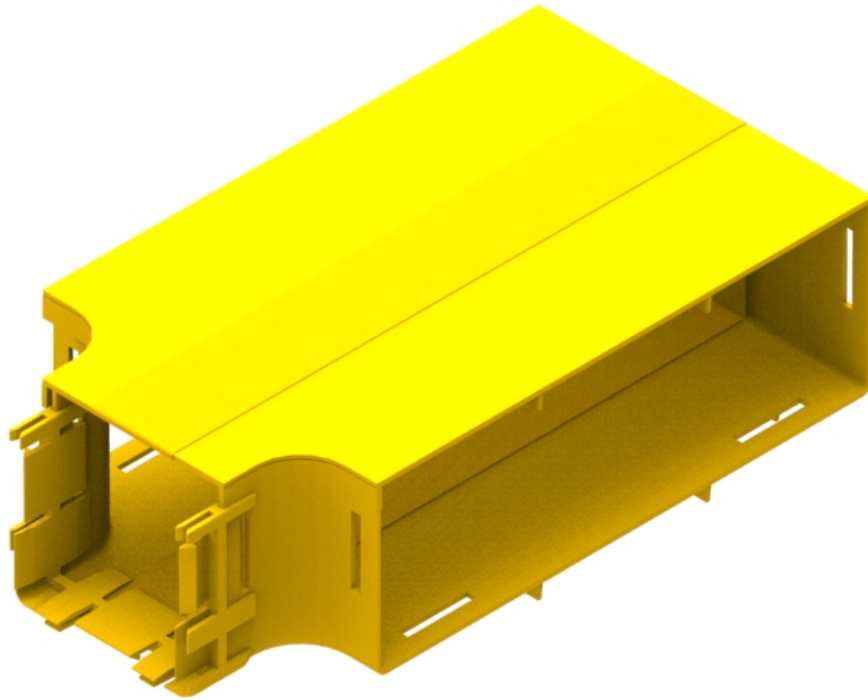




Part Number: **TC1279-398A**
Description: **TEE ASSEMBLY, HORIZONTAL,
100mm DUCT TO 300mm DUCT**



Use / Application:

This tee is used to provide a 100mm tee intersection with standard 300mm straight ducting. Also needed are joiners for 300mm x 100mm duct; either: standard joiners (Part No: TC1279-320KIT) or slotless joiners (Part No: TC1279-287A); available separately. A slotless joiner for 100mm x 100mm duct; (Part No: TC1279-248A) is supplied. All the joiners for the duct connections provide a smooth and strong joint, with mating items.

Benefits & Features:

- Includes cover (Part No: TC1279-280)
- Joiners for 300mm x 100mm duct, are available separately
- Ribs included for extra strength
- Tough, fire retardant material
- Also available without cover; as Part No: TC 1279-398
- Purchase by the unit

Technical Attributes:

Dimensions	202mm (W) x 110mm (H) x 357/385mm (D) (Body/Joiner)
Weight	812g (Cover: 304g)
Materials	Fire retardant plastic, Halogen free, UL94-V0 rated