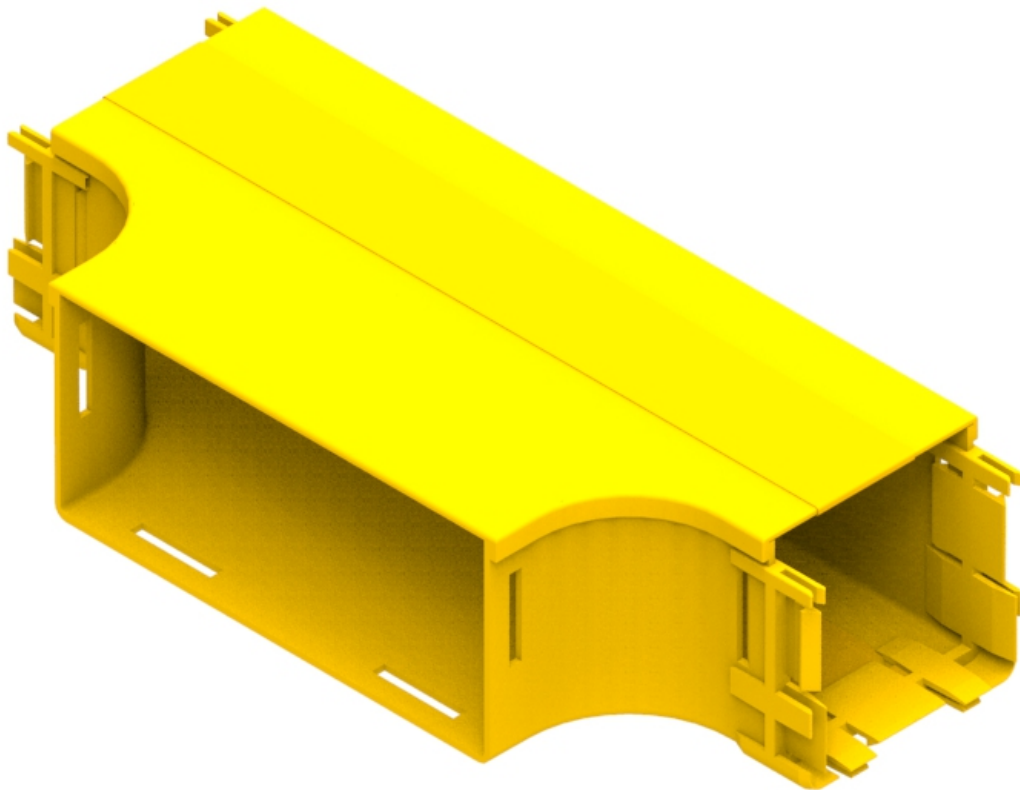




Part Number: **TC1279-393A**
Description: **TEE ASSEMBLY, HORIZONTAL,
100mm DUCT TO 220mm DUCT**



Use / Application:

This tee is used to provide a tee intersection between standard 100mm and 220mm straight ducting. It comes with a standard 100mm joiner (Part No: TC1279-27) at each end, which provides a smooth and strong joint. A standard 220mm joiner (Part No: TC1279-25) is used to connect to 220 mm ducting. This joiner is available separately.

Benefits & Features:

- Includes cover
- Clips straight into joiners. 2 x 100mm duct joiners supplied. 1 x 220mm duct joiner; available separately
- Tough, fire retardant material
- Purchase by the unit

Technical Attributes:

| | |
|-------------------|---|
| Dimensions | 415mm (W) x 106mm (H) x 180mm (D) |
| Weight | 764g (Lid = 260g) |
| Materials | Fire retardant plastic, Halogen free, UL94-V0 rated |