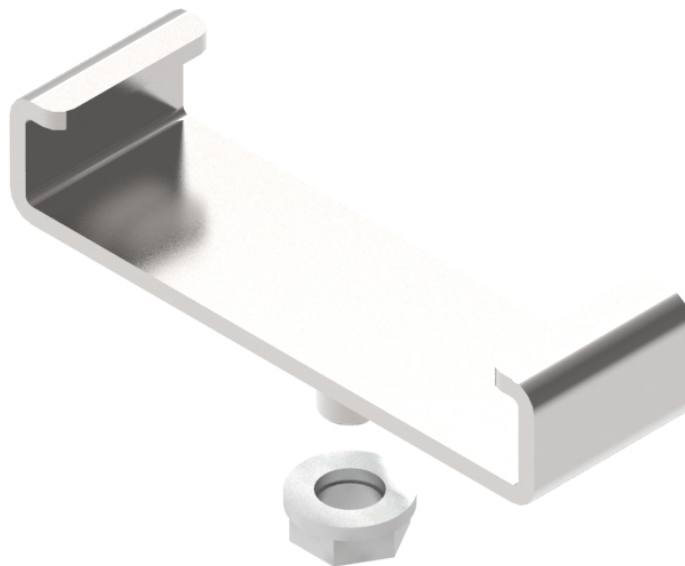


Part Number: **TC1279-147A**  
 Description: **MOUNTING BRACKET ASSEMBLY,  
 FOR 50mm DUCT**



## Use / Application:

This duct mounting bracket is used to attach 50mm plastic duct to existing duct mounting ironwork. It allows 50mm ducting to be fitted to an existing support bracket. The mounting bracket grips the 50mm ducting and bolts to a straight bracket (available separately), which bolts to a standard 1/2" (12mm) steel rod (available separately)

## Benefits and Features:

- Simple, direct application
- Robust
- Economical

## Technical Attributes:

<b>Dimensions</b>	20mm (W) x 25mm (H) x 68mm (D)
<b>Weight</b>	70g
<b>Materials</b>	Mild Steel, Nickel Plated
<b>Colour</b>	Silver