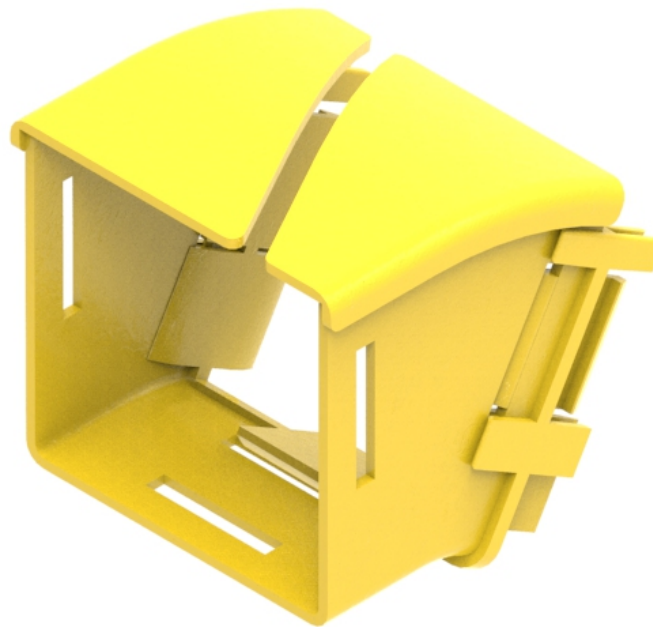




Part Number: **TC1279-111-30R**

Description: **ELBOW ASSEMBLY, DOWN, 30 DEGREES,
EXTERNAL SLOT, RETROFIT, 100mm DUCT**



Use / Application:

The 30° down elbow is a 100mm vertical lead off with an external slot, so that new fibres can be installed within the elbow and existing fibres removed, where necessary. This is usually used where cables may be already installed and either an angular duct feed off or an alignment adjustment is needed. There are two 100-mm outlets: one is fitted with a special joiner (Part No: TC1279-27SP). The special joiner provides a smooth internal curve for optical fibre cords. The other side can use either: a standard joiner (Part No. TC1279-27) or slotless joiner (Part No: TC1279-248A); which are available separately.

Benefits & Features:

- Provides fibre access and retrofit options
- Provided with a special 100mm duct joiner (Part No: TC1279-27SP)
- Clips straight into joiner (Part No: TC1279-27) or slotless joiner (Part No: TC1279-248A); available separately
- Tough, fire retardant material
- Purchase by the unit

Technical Attributes:

Dimensions	112mm (W) x 118mm (H) x 112/130mm (D) (Body/Joiner)
Weight	150g
Materials	Fire retardant plastic, Halogen free, UL94-VO rated