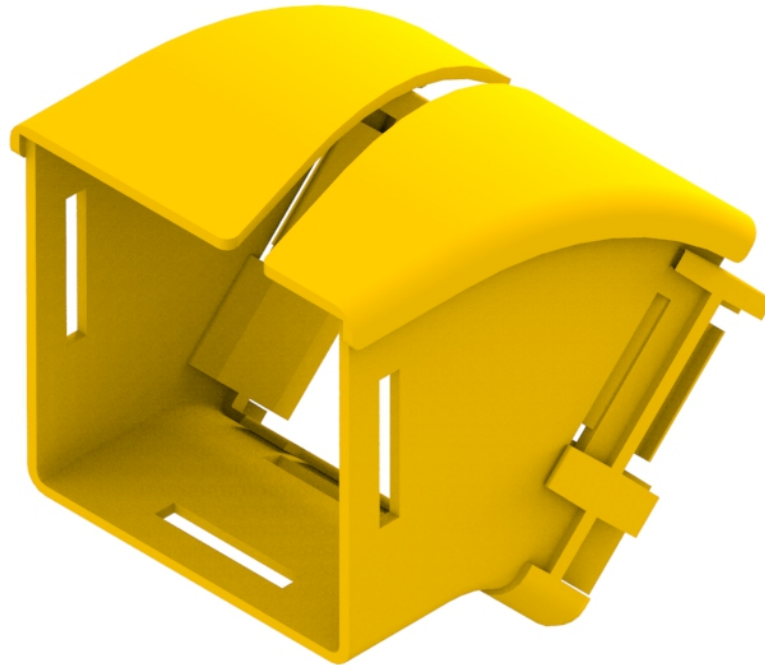




Part Number: **TC1279-111-45R**  
Description: **ELBOW ASSEMBLY, DOWN, 45°,  
EXTERNAL SLOT, RETROFIT, 100mm DUCT**



## Use / Application:

The 45° down elbow is a 100mm vertical lead off with an external slot, so that new optical fibre cords can be installed within the elbow and existing optical fibre cords removed, where necessary. It is usually used where cords may be already installed, and either an angular duct feed off or an alignment adjustment is needed. There are two 100mm outlets. One is equipped with a glued-in, modified joiner. (Part No: TC1279-27SP). (The special joiner provides a smooth internal curve for optical fibre cords.) The other side uses either: a standard joiner (Part No. TC1279-27) or a slotless joiner (Part No: TC1279-248A); that are available separately.

## Benefits & Features:

- Provides fibre access and retrofit options
- Provided with a special 100mm duct joiner that provides a smooth transition for optical fibre cords
- Clips straight into joiner (Part No: TC1279-27) or slotless joiner (Part No: TC1279-248A); available separately
- Tough, fire retardant material
- Purchase by the unit

## Technical Attributes:

<b>Dimensions</b>	112mm (W) x 115mm (H) x 130/137mm (D) (O/A Body/Joiner)
<b>Weight</b>	186g
<b>Materials</b>	Fire retardant plastic, Halogen free, UL94-VO rated