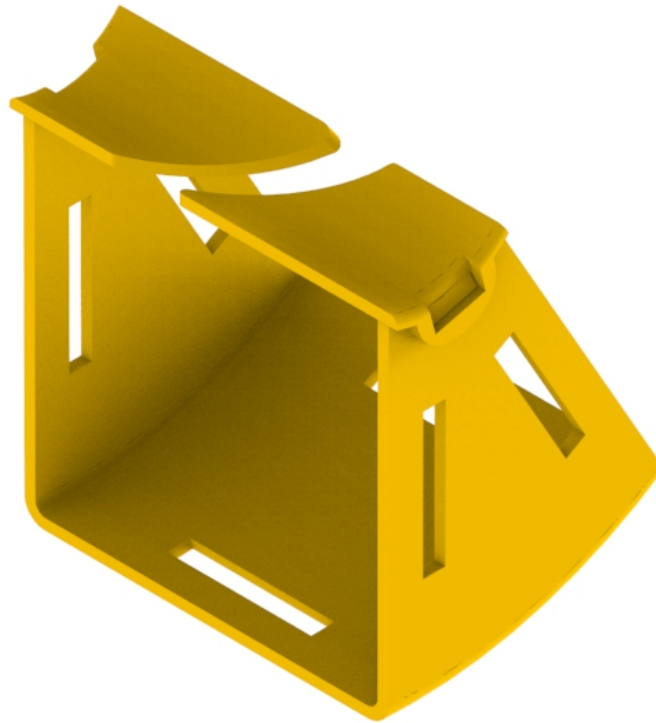




Part Number: **TC1279-113-30R**
Description: **ELBOW ASSEMBLY, UP, 30°,
EXTERNAL SLOT, RETROFIT, 100mm DUCT**



Use / Application:

The 30° up elbow is a 100mm vertical lead off with an internal slot, so that new optical fibre cords can be installed within the elbow and existing optical fibre cords removed, where necessary. This is usually used where cords may be already installed and either an angular duct feed off or an alignment adjustment is needed. There are two 100mm outlets which use either: standard joiners (Part No. TC1279-27) or slotless joiners (Part No: TC1279-248A); that are available separately.

Benefits & Features:

- Provides fibre access, and retrofit options
- Clips straight into either: a standard joiner (Part No. TC1279-27) or a slotless joiner (Part No: TC1279-248A); which are available separately
- Tough, fire retardant material
- Purchase by the unit

Technical Attributes:

Dimensions	123mm (W) x 110mm (H) x 104mm (D)
Weight	250g
Materials	Fire retardant plastic, Halogen free, UL94-VO rated