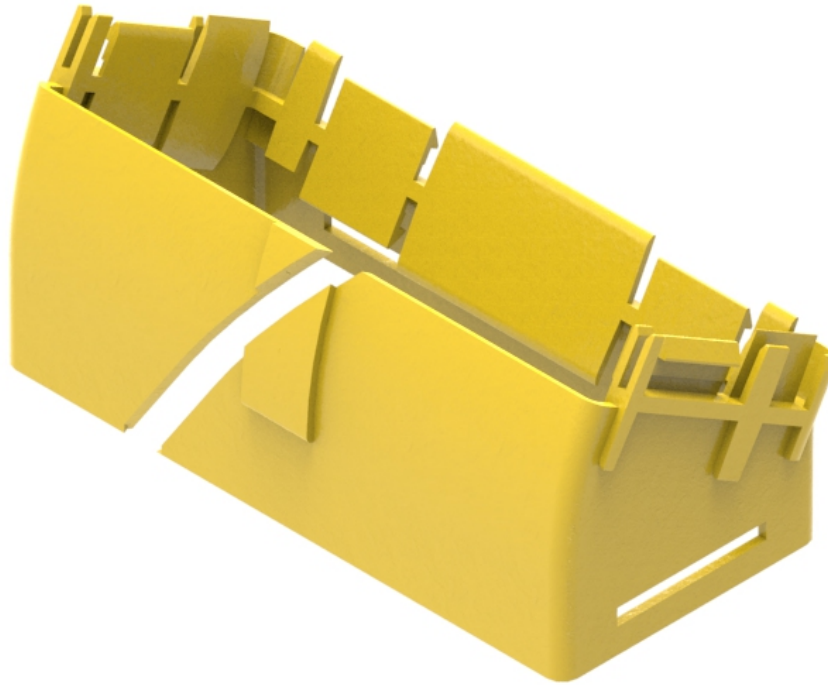




Part Number: **TC1279-123-30R**  
Description: **ELBOW ASSEMBLY DOWN, 30°,  
EXTERNAL SLOT, RETROFIT, 220mm DUCT**



## Use / Application:

The 30° down elbow is a 220mm angled lead off with an external slot, so that new fibres can be installed within the elbow and existing fibres removed, where necessary. This is usually used where cables may be already installed and either an angular duct feed off or an alignment adjustment is needed. There are two 220mm outlets: one is fitted with a special joiner (Part No: TC1279-25SP). The other side can use either: a standard joiner (Part No. TC1279-25) or slotless joiner (Part No: TC1279-250A); which are available separately.

## Benefits & Features:

- Provides fibre access and retrofit options
- Provided with a special 220mm duct joiner that provides a smooth transition for optical fibre cords
- Clips straight into joiner (Part No: TC1279-25) or slotless joiner (Part No: TC1279-250A); available separately
- Tough, fire retardant material
- Purchase by the unit

## Technical Attributes:

<b>Dimensions</b>	235mm (W) x 122mm (H) x 125mm (D)
<b>Weight</b>	230g
<b>Materials</b>	Fire retardant plastic, Halogen free, UL94-V0 rated