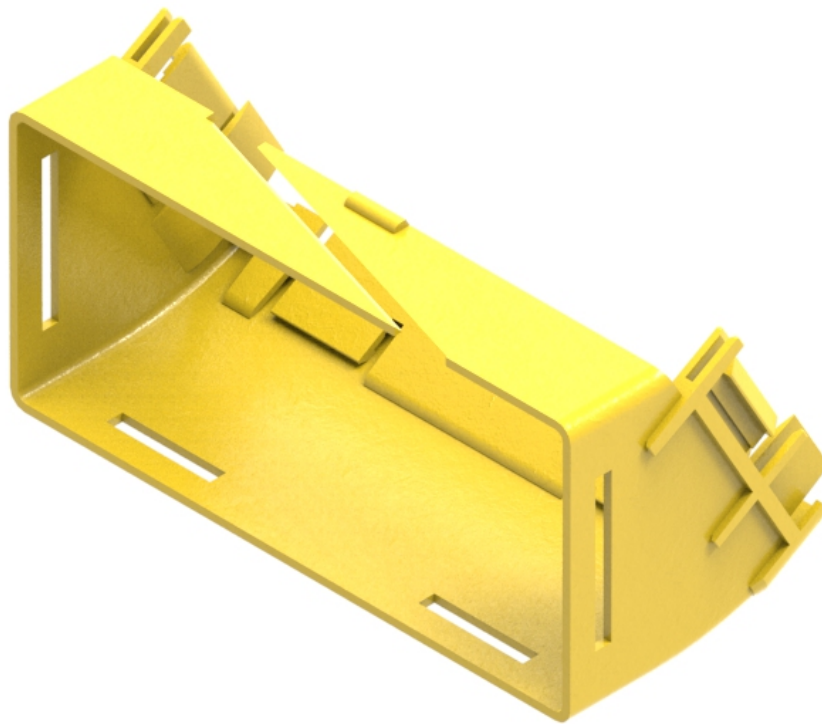




Part Number: **TC1279-125-30R**  
Description: **ELBOW ASSEMBLY UP, 30°,  
INTERNAL SLOT, RETROFIT, 220mm DUCT**



## Use / Application:

The 30° up elbow is a 220mm angled lead off with an external slot, so that new fibres can be installed within the elbow and existing fibres removed, where necessary. This is usually used where cables may be already installed and either an angular duct feed off or an alignment adjustment is needed. There are two 220mm outlets which use either: a standard joiner (Part No. TC1279-25) or slotless joiner (Part No: TC1279-250A); which are available separately.

## Benefits & Features:

- Provides easy access for fibre cords and allows fibre cords to be retrofitted
- Clips straight into joiner (Part No: TC1279-25) or slotless joiner (Part No: TC1279-250A); available separately
- Tough, fire retardant material
- Purchase by the unit

## Technical Attributes:

<b>Dimensions</b>	110mm (W) x 93mm (H) x 226mm (D)
<b>Weight</b>	500g
<b>Materials</b>	Fire retardant plastic, Halogen free, UL94-V0 rated