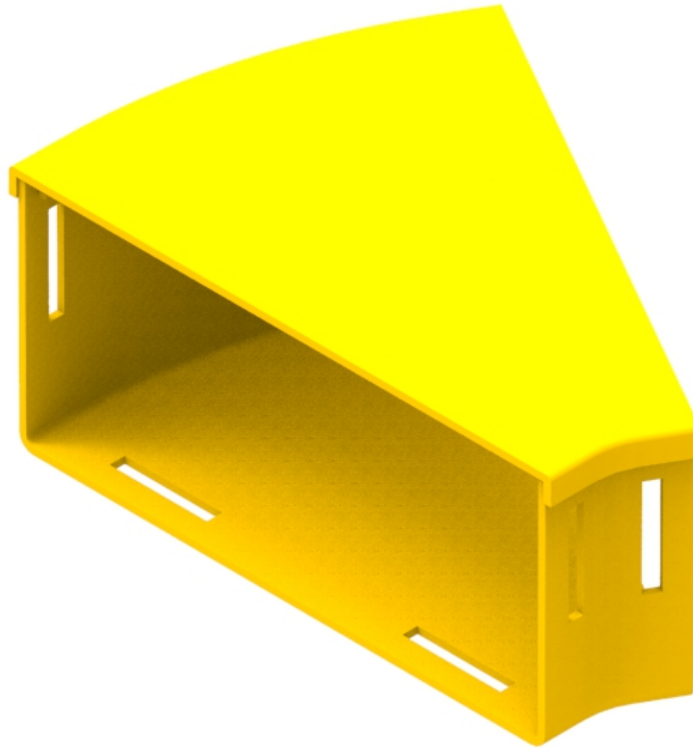




Part Number: **TC1279-45A**
Description: **ELBOW ASSEMBLY, HORIZONTAL,
30°, 220mm DUCT**



Use / Application:

This elbow provides a method of diverting the 220mm duct system around objects. It can be used with a tee to feed a duct at 30° to the main system. The elbow can be used in pairs to align ducts and other components with a 60mm offset. The elbow is connected to the 220mm duct using either a: standard joiner (Part No: TC1279-25, Telstra Part No: S 353/515) or a slotless joiner (Part No: TC1279-250A), which are available separately.

Benefits & Features:

- Provides a 30° bend
- Includes cover (Part No: TC1279-44)
- Clips straight into either a: standard joiner (Part No: TC1279-25) or a slotless joiner (Part No: TC1279-250A); which are available separately
- Tough, fire retardant material
- Purchase by the unit

Technical Attributes:

Dimensions	230mm (W) x 105mm (H) x 173mm (D)
Weight	240g
Materials	Fire retardant plastic, Halogen free, UL94-V0 rated