

## groov DC OUTPUT SOURCING MODULE

### Features

- > 24 channels per module
- > Module cover with LED indicates module status
- > Touch-sensitive pad triggers display of module information on *groov* EPIC® processor's display
- > Channel-specific LEDs simplify troubleshooting
- > Operating temperature: -20 to 70 °C
- > UL Hazardous Locations approved and ATEX compliant
- > Guaranteed for life



GRV-ODCSRC-24 Output Module

### DESCRIPTION

*groov* I/O modules are part of the *groov* EPIC® (Edge Programmable Industrial Controller) system. Wired directly to field devices (sensors and actuators), *groov* I/O translates the electrical signals from those devices into the digital language computers understand—so you can monitor and control devices and use their data wherever you need it, in your local computer network or in cloud services.

The **GRV-ODCSRC-24** module is a DC output module (source current to loads) that can switch 5–60 VDC loads. It provides 24 DC output channels in one *groov* module and can handle 0.4 A per channel.

See “[Features and Specifications](#)” on [page 2](#) for additional details.

Wiring is simplified with a top-mounted connector, which provides spring-clamp terminals for common, power, and field wiring. The connector is held in place by a single, captive retention screw but can be removed with the field wiring intact for wiring in advance or easier module field replacement.

A swinging, two-position cover protects wiring from inadvertent contact, as does the dead-front design. The two positions of the cover offer the option of more space to accommodate larger wire. The module cover provides a touch-sensitive pad; touch the pad and the

*groov* EPIC processor displays information about the module, including specifications and a wiring diagram.

The module pivots into place and is held securely in place by a captive hold-down (retention) screw.

*groov* I/O modules are hot swappable (which means they can be installed or removed without turning off power to the unit) and self-identifying—as soon as you mount the module to the chassis, it communicates to the processor and identifies itself.

Each *groov* I/O module cover provides a large module LED to indicate module health at a glance. Discrete modules also include channel-specific LEDs that display the on/off status of each channel.

### Part Number

Part	Description
GRV-ODCSRC-24	DC digital output, 24 channels, 5–60 VDC, sourcing

## FEATURES AND SPECIFICATIONS

For “Specifications,” see [page 3](#).

### Features

Feature	GRV-ODCSRC-24
Number of Channels	24
Channel-to-Channel Isolation	
On/Off State	●
On/Off Totalization	●
Output Pulsing/TPO	●
Quality Indication	
Watchdog Timeout	●

## Specifications

Specification	GRV-ODCSRC-24
Line Voltage Range (nominal)	12–24 VDC
Line Voltage Range (max)	5–60 VDC
Current Rating (per channel)	0.4 A
Surge Current	1.5 A for 1.0 Second
Recommended Max. Fuse (fast) / Circuit Breaker	2 A, 60 VDC / channel or 20 A, 60 VDC common
Minimum Load	5.0 mA
Output Voltage Drop	0.3 V max. at 0.4 A
Off-State Leakage (per channel)	<10 $\mu$ A (@ 60 V, 70 °C)
Peak Blocking Voltage	60 VDC
TPO Period (min, max, resolution)	0.005 seconds, 429496.7296 seconds, 0.001 seconds
Turn On / Off Time	2.5 ms
Isolation (field-to-logic)	300 V working, 1500 V transient
Isolation (channel-to-channel)	None
Number of Channels	24
Chassis Power Consumption	1.2 W
Minimum <i>groov</i> EPIC Firmware Version	1.0.0
Minimum PAC Project Version	10.0000
Minimum Library Package for CODESYS Version	1.0.0.0
Wire Size	28–14 AWG
Wire Strip Length	0.315–0.354 inches (8–9 mm)
Torque, connector screw	2.5 in-lb (0.28 N-m)
Torque, hold-down screw	3.5 in-lb (0.4 N-m)
Temperature (operating)	-20 °C to +70 °C
Temperature (storage)	-40 °C to +85 °C
Relative Humidity (non-condensing)	5–95%
MTBF (minimum, 25 °C)	1.2 Mhrs
Agency Approvals	UL/cUL (Class 1, Div 2) <sup>a</sup> ; CE: ATEX (Category 3, Zone 2) and RoHS; DFARS; CB Scheme; UKCA
Warranty	Lifetime

a. For use in hazardous locations, equipment must be mounted in an enclosure that meets the requirements of the National Electrical Code, ANSI/NFPA 70, and ANSI/ISA-61010-1 (82.02.01).

## MOUNTING

Mount *groov* I/O modules onto a *groov* EPIC chassis (see the [groov EPIC Chassis Data Sheet](#) (form 2247) for instructions). To learn the names and physical features of the parts of the module, see “Description of Module Parts” on page 10.

### Mounting the Module

The numbers on the diagrams correspond to the numbered steps in these instructions.

**CAUTION:** For electrical safety, de-energize field devices wired to the terminal connector before starting.

1. Orient the *groov* EPIC chassis so that the module connector numbers are right-side up, with **0** on the left as shown in the diagram.
2. Hold the module at a 45° angle, and line up the alignment tab on the back tip of the module with the slot at the back of the chassis.
3. Pivot the front of the module down to the module connector on the chassis, and push to snap the module into the connector.
4. Lift the module cover up to access the module hold-down (retention) screw, and tighten the screw to secure the module into position.

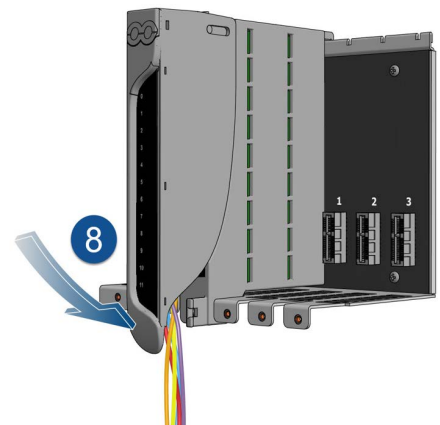
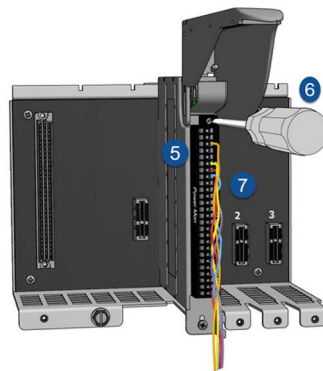
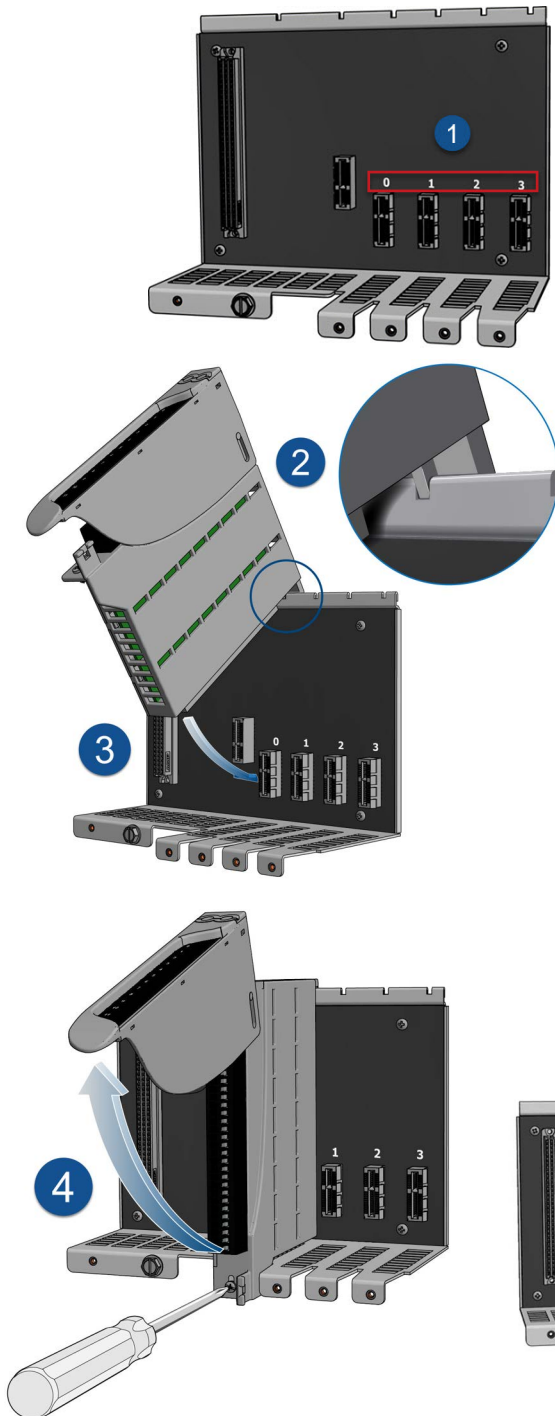
**CAUTION:** Do not over-tighten. See the torque specs in the “Specifications” table.

5. If the module does not have a terminal connector, install one.
6. Secure the terminal connector by tightening the terminal connector screw.

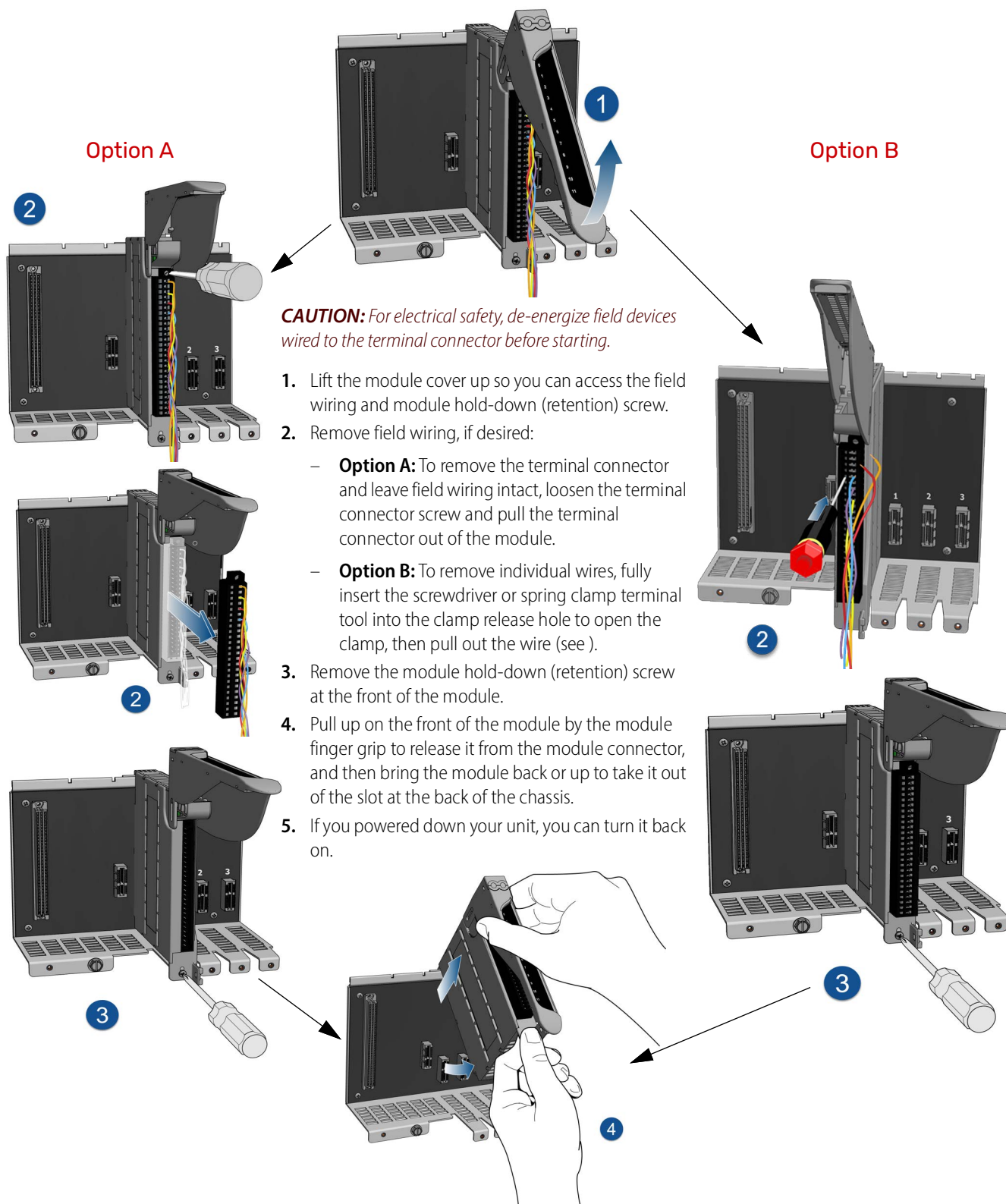
**CAUTION:** Do not over-tighten. See the torque specs in the “Specifications” table.

7. Follow the wiring instructions in the “Pinout and Wiring” section to wire your field devices to the channels on the terminal connector.
8. When wiring is complete, bring the module cover back down to cover the wires. If the wires are too thick to close the module cover easily, lift the module cover, raise the back of the module cover up to the higher position, and then bring the module cover back down to cover the wires.

If you powered down your unit, you can turn it back on when you are done installing modules and wiring.



## Un-mounting the Module



## PINOUTS AND WIRING

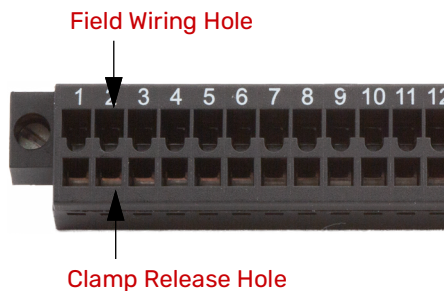
Before you begin wiring your field devices to your *groov* I/O module, make sure you select and prepare the appropriate wires and review how to use the spring clamps on terminal connectors:

**Select and prepare the appropriate wire.** The terminal connectors are rated for 28–14 AWG wire. Strip the wire according to the Wire Strip Length listed in the Specifications table on [page 3](#). If you're using stranded wire, twist or tin the strands or add ferrules to make it easier to insert the wire and create a stronger connection.

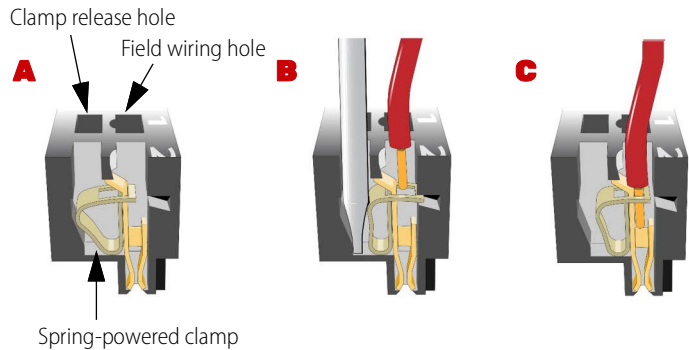
**Use the right tool.** To open the spring clamps, make sure to use either:

- a flathead screwdriver with a tip dimension of 2.5 mm x 0.4 mm, **or**
- the *groov* spring-clamp terminal tool, typically supplied with a *groov* EPIC chassis. You can order a replacement spring-clamp terminal tool on our website [www.opto22.com](http://www.opto22.com). Search for GRV-TEX-SCTOOL.

**Familiarize yourself with the spring clamps.** On the terminal connector, each terminal number has a corresponding **clamp release hole** and **field wiring hole**.



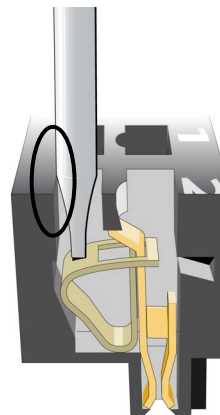
A spring-powered clamp sits between the clamp release hole and the field wiring hole (A). When you push the correct screwdriver (see above for dimensions) or the *groov* spring-clamp tool straight down into the clamp release hole, the diameter of the screwdriver or tool displaces the spring laterally, which exposes the hole through which you can insert the wire (B). When you pull the screwdriver or spring-clamp tool straight up, the spring returns to its original position, which causes the clamp to hold the wire. (C). You can view [a video](#) that explains how to wire your field devices and demonstrates how the spring clamp works on our website, [www.opto22.com](http://www.opto22.com).



GRV-ODCSRC-24 modules should be installed with appropriate external over-current protection devices (DC rated fuse or circuit breaker). See "[Specifications](#)" on [page 3](#) for recommended values. Failure to provide adequate over-current protection may result in damage not covered by the Opto 22 warranty.

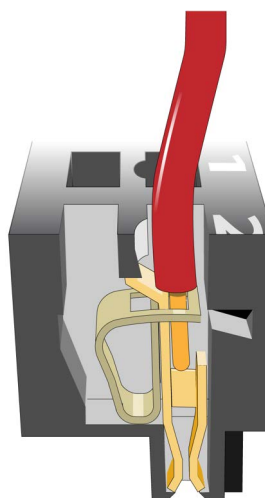
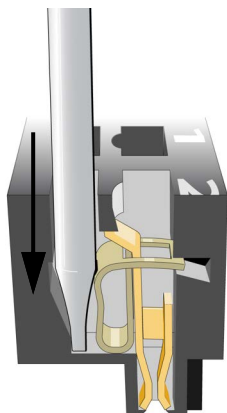
## Inserting Wires

1. Orient the module or terminal connector to match the wiring diagrams on .
2. To make it easier to handle the screwdriver or the spring-clamp terminal tool and the field wires, secure the module or terminal connector:
  - If you are working with the terminal connector while it is attached to the module, make sure the module is screwed securely to the chassis.
  - If you are working only with the terminal connector, secure the terminal connector with a clamp.
3. Open the spring clamp:
  - a. Insert the screwdriver or spring-clamp terminal tool into the clamp release hole, pressing the tool against the side of the hole furthest from the terminal numbers.



- b. Press straight down firmly until you feel the screwdriver or tool reach the bottom.

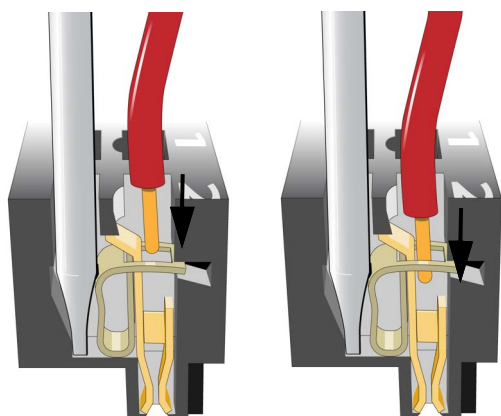
*Important: Let the shape of the tool, as it is pressed straight down, open the clamp. Do not rock or wiggle the tool because it may damage the clamp.*



6. Test that the wire is secure by gently pulling on it. If the wire pulls out, repeat steps 3 and 4.

- c. You can confirm that the clamp is open by looking into the field wiring hole.
- If the hole is dark, the clamp is open. You can go to the next step.
  - If you see a shiny surface, repeat steps a through c.
- Important:** Do not rock or wiggle the tool to try to open the clamp because it may damage the clamp.

4. Insert the wire into the field wiring hole.



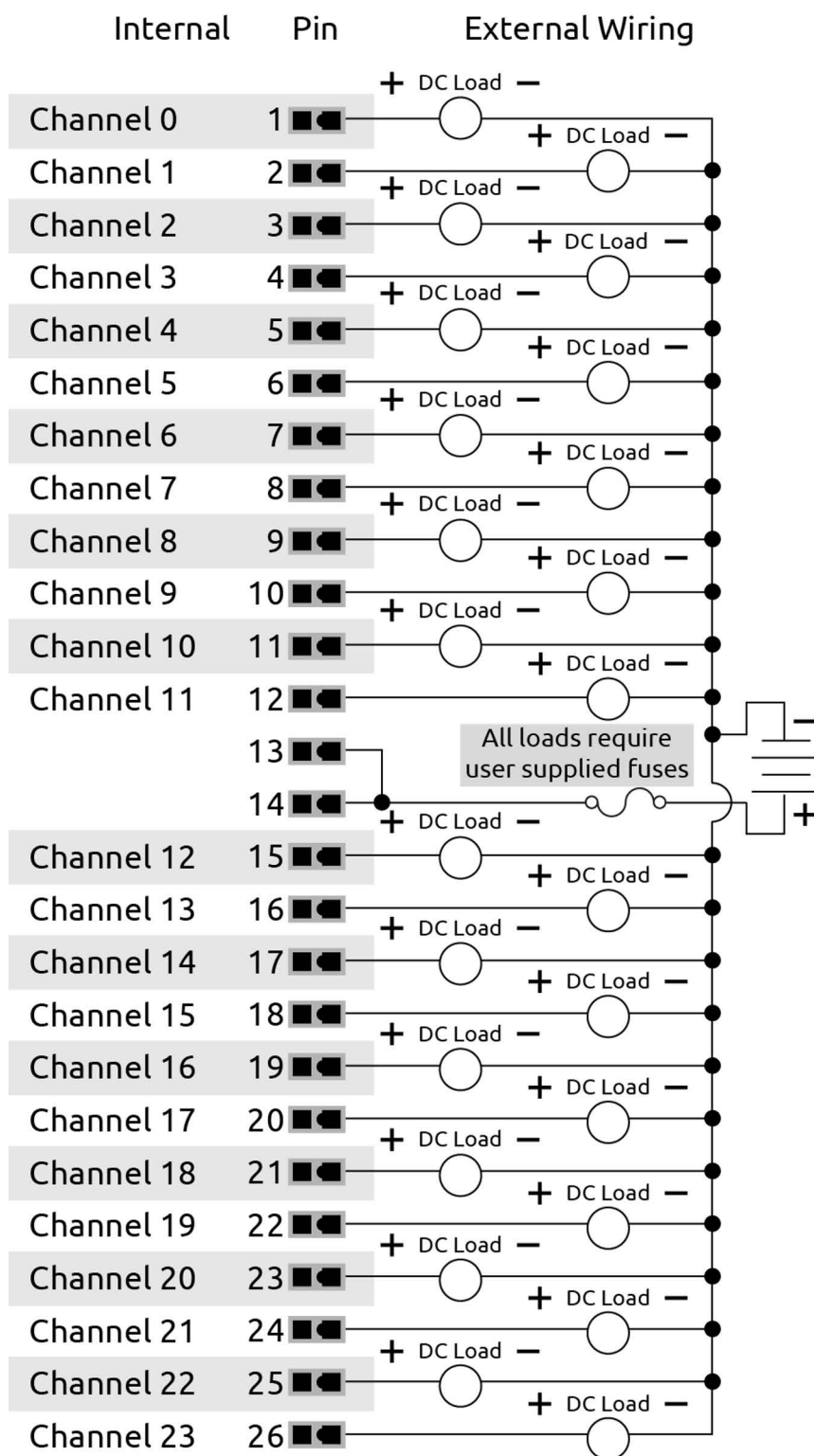
5. Pull out the screwdriver or spring-clamp terminal tool. The spring returns to its original position and clamps down on the wire.

## Removing Wires

1. Insert the screwdriver or spring-clamp terminal tool into the clamp release hole, pressing the tool against the side of the hole furthest from the terminal numbers.
2. Press straight down firmly until you feel the screwdriver or tool reach the bottom.
3. Pull the wire out.
4. Pull out the screwdriver or spring-clamp terminal tool. The spring returns to its original position.

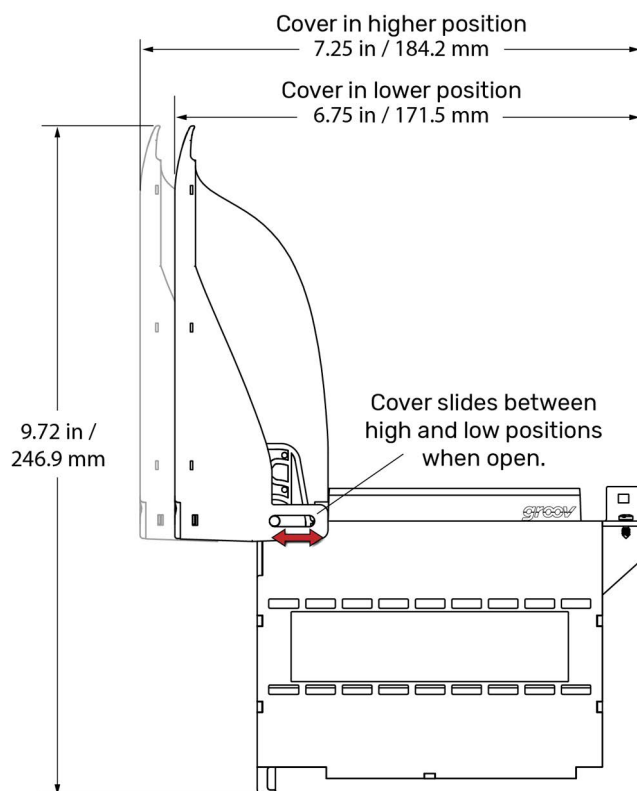


## WIRING: GRV-ODCSRC-24





## DIMENSIONS: GRV-ODCSRC-24

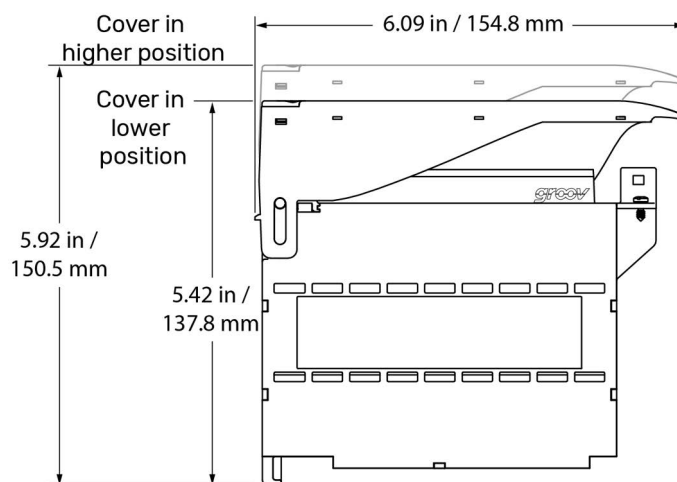
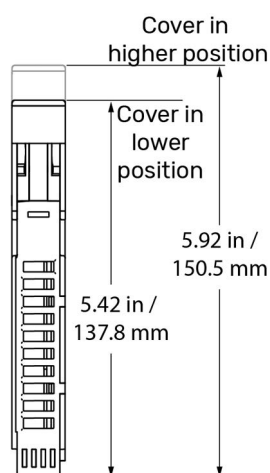


The module cover pivots and can be adjusted to two different heights (positions). The higher position provides more space to accommodate thicker wires.

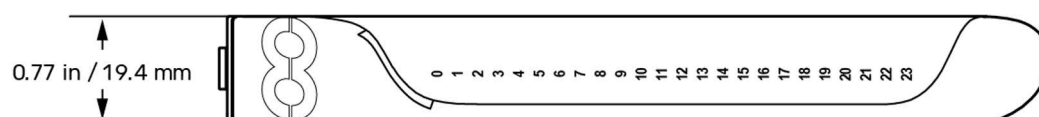
To switch between higher and lower position, lift the cover to at least a 45° angle. Grasp the hinged end of the module cover and do one of the following:

- Pull up on the back hinge to slide it to the higher position.
- Push down on the back hinge to slide it to the lower position.

You cannot switch between the higher and lower positions while the cover is closed.

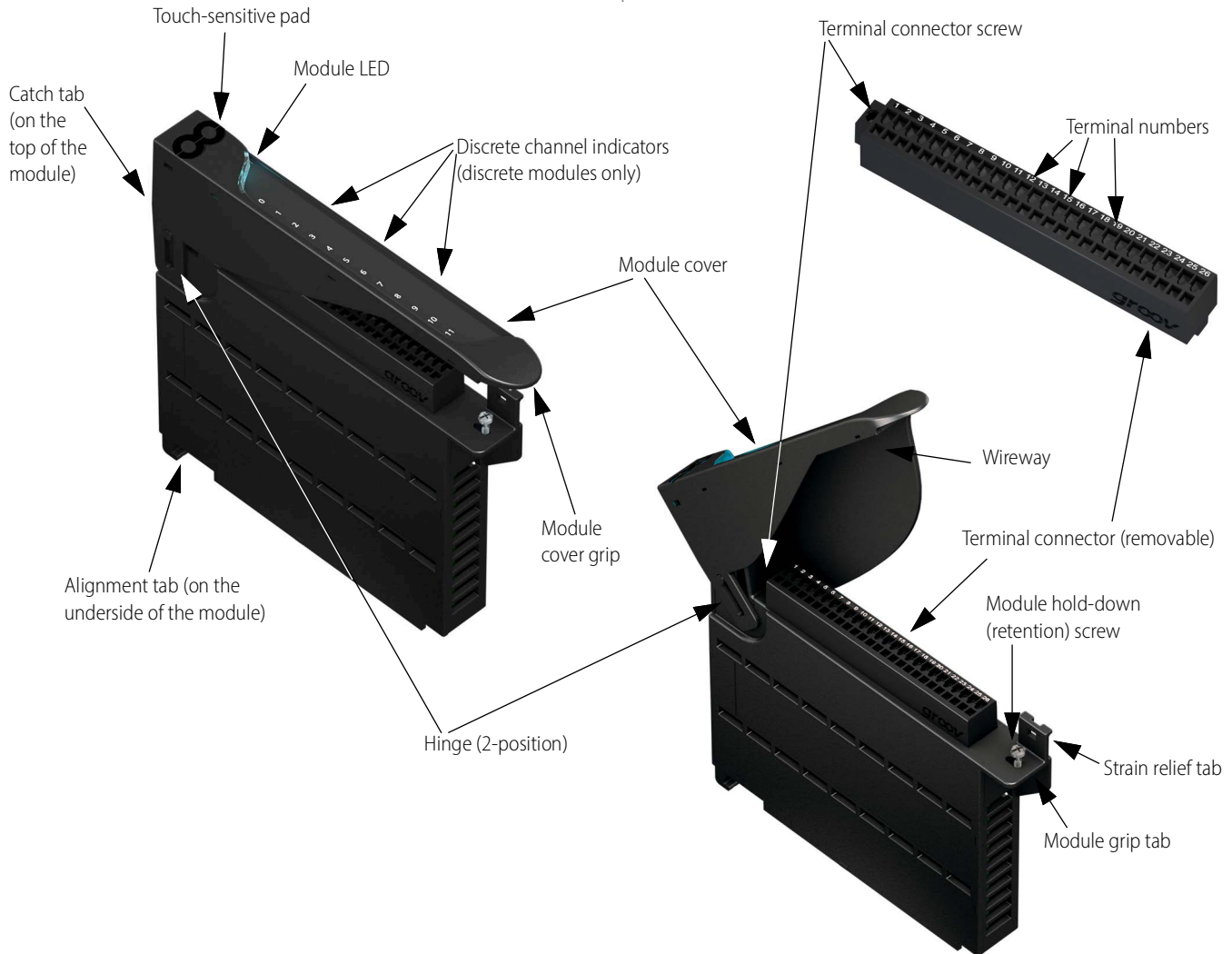


### GRV-ODCSRC-24



## DESCRIPTION OF MODULE PARTS

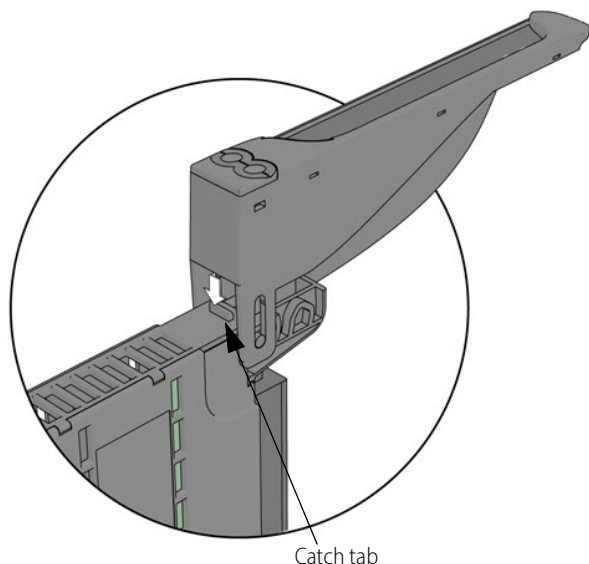
The following diagram identifies the parts of the modules. The installation instructions in the documentation rely on these terms to describe how to handle the module.



Some parts offer unique features:

- Module LED:** Provides a visual indication of the health of the module. For example, if it is blue, the module is operating normally. If it is blinking blue, the module's information is being displayed on the *groov* EPIC processor's screen. For a complete list of the various colors that this LED might display, see the [groov EPIC User's Guide](#) (form 2267).
- Touch-sensitive pad:** Offers a convenient way to display the module's information on the *groov* EPIC processor. Press on the pad for approximately two seconds and the processor displays that module's information on the screen, as well as changing the module LED to a blinking blue light.
- Catch tab:** Located at the top of the module, the catch tab provides a place for the cover to "catch" or stop. This prevents the
- Hinge and Wireway:** These two features work together to provide more space for wires. The hinge can be adjusted between a lower position and a higher position. The wireway is the space underneath the module cover. To increase this space, you can raise the hinge to the higher position.

cover from closing so that you can work on attaching or detaching wires to the terminal connector.



- **Strain relief tab:** This tab offers a way to collect wires into a bundle and secure them to the module. Attaching the wires to the strain relief tab can help hold the wires in a semi-fixed position, preventing them from interfering while you work on a nearby module. It also prevents strain on the part of the wire attached to the terminal connector.

Collect the wires into a bundle, pull a zip tie through the hole in the tab, wrap the zip tie around the bundle and tab, and then clip the excess zip tie.

